



New England Secondary School Consortium Key Indicators

Phase III Technical Report

August 2012



New England Secondary School Consortium Key Indicators

Phase III Technical Report

August 2012



Project Staff

Lonnie Kaufman, *Senior Research Manager*

Stefanie Santaniello, *Research Manager*

Carrie Bernstein, *Research Analyst*

Report Information

This report is conducted under contract with the Nellie Mae Education Foundation in Quincy, Massachusetts. This work would not be possible without considerable cooperation and assistance from the data coordinators and their staffs in the five participating states comprising the New England Secondary School Consortium.

The University of Massachusetts Donahue Institute is the public service, outreach, and economic development unit of the University of Massachusetts President's Office. Established in 1971, UMDI strives to connect the Commonwealth with the resources of the University through services that combine theory and innovation with public and private sector applications.

UMDI's Research and Evaluation group specializes in applied social science research, including program evaluation, survey research, policy research, and needs assessment. The Research and Evaluation group has designed and implemented numerous innovative research and evaluation projects for a variety of programs and clients in the areas of education, human services, economic development, and organizational development.

University of Massachusetts Donahue Institute
Research and Evaluation Group
100 Venture Way, Suite 5
Hadley, MA 01035-9462
P: (413) 587-2400
F: (413) 587-2410
www.donahue.umassp.edu

Contents

I. INTRODUCTION 1
 PURPOSE & GOALS OF THE NEW ENGLAND SECONDARY SCHOOL CONSORTIUM (NESSC) 1
 THE DATA STRATEGIC ACTION TEAM..... 1
 ROLE OF THE DATA COORDINATOR (RESEARCH IN ACTION) 1
 ROLE OF THE UMASS DONAHUE INSTITUTE (UMDI) EVALUATION TEAM..... 2

II. METHODOLOGY..... 3
 DESCRIPTION OF DATA METHODS 3
 GRADUATION & COMPLETION RATES 6
 DROPOUT RATE 7
 POST-SECONDARY MATRICULATION 8
 COLLEGE READINESS 9
 POST-SECONDARY SUCCESS..... 10

III. KEY INDICATORS 11
 PROGRESS TOWARDS 2016 GOALS..... 11
 GRADUATION RATES 12
 DROPOUT RATES 13
 POST SECONDARY MATRICULATION 14
 SUBGROUPS 14
 DATA TABLES BY STATE 19
 CONNECTICUT INDICATORS 19
 MAINE INDICATORS 21
 NEW HAMPSHIRE INDICATORS 23
 RHODE ISLAND INDICATORS 25
 VERMONT INDICATORS..... 27

APPENDIX A: MEMBERS OF THE DATA STRATEGIC ACTION TEAM 29
APPENDIX B: DATA SUBMITTED BY THE STATES..... 30
 RIA NESSC METRICS PROCEDURAL GUIDEBOOK FOR 2012..... 50

I. Introduction

Purpose & Goals of the New England Secondary School Consortium (NESSC)

The New England Secondary Schools Consortium (NESSC) is an innovative five-state partnership committed to fostering forward-thinking reforms in the design and delivery of secondary education. The Consortium's vision, which was created and endorsed by education officials from each of five participating states—Connecticut, Maine, New Hampshire, Rhode Island, and Vermont—seeks to ensure every adolescent in the region graduates from a new generation of high-performing, internationally competitive high schools prepared for success in the colleges, careers, and communities of our interconnected global society.

The NESSC was established in the fall of 2008 with funding from the Nellie Mae Education Foundation and the Bill and Melinda Gates Foundation. The Consortium has established ambitious performance goals to be achieved in each of the five states by 2016: (1) Increase five-year graduation rates across the five states; (2) Decrease annual dropout rates across the five states; (3) Increase the percentage of students enrolling in two- and four-year college degree programs or pursuing industry certified accredited post-secondary certificates; and (4) Increase the percentage of students who graduate from high school college ready.¹

The Data Strategic Action Team

In order to track and measure progress in relation to its stated goals, NESSC brought representatives with data experience together from each state to form the “Data Team.” The initial charge of the Team was to discuss data collection across the states, identify current methods used to analyze data, and specify how states could report common indicators of students' success in relation to the NESSC's four goals. During Phase III, the Data Team focused on the five tasks outlined in NESSC's Data Team charge:

The Data Strategic Action Team will:

1. Build relationships and understanding among data and information staff from state departments of education and collegiate representatives involved in the New England Secondary School Consortium.
2. Strengthen the individual and collective understanding of the content and context of the NESSC work relative to the 2016 Goals and other key measures of progress.
3. Review and advise on the development of a college readiness index.
4. Assist in ensuring comparability of data collection practices so that states and commissioners can report on key attainment measures to their publics using the common NESSC rules and processes.
5. Share best practices and discuss solutions to issues in a collegial, collaborative setting.

Role of the Data Coordinator (Research in Action)

During Phase III, the Data Team identified and hired a Data Coordinator. Research in Action was selected to fill this role. Drawing on materials from previously published technical reports and Team meeting notes, Research in Action organized and collated the guidelines for state data submission and communicated with state representatives to obtain the required data updates. They also checked the data for consistency and accuracy, flagging data discrepancies using an internal test procedure, and then communicated and coordinated with states

¹ Taken from the NESSC Strategic Plan: July 2012-June 2016. Goals have been changed from previous goals which were similar, but included specific indicators with the goal itself.

to update any inaccuracies. After these procedures for verification were complete, Research in Action transmitted the data to the UMass Donahue Institute (UMDI).

Role of the UMass Donahue Institute Evaluation Team

The role of UMDI during Phase III was to receive data from the states via Research in Action and report on NESSC 2016 key indicators (2016 goals). These key indicators are compared with data from the prior two years of data collection to measure progress toward the initiative's desired outcomes from the start of the project. UMDI staff also attended Data Team meetings and debriefed with the Team's facilitator from the Great Schools Partnership (GSP) and consultants from Research in Action.

In order to verify the information and results presented herein, UMDI provided an initial draft of the report tables to all Data Team members and/or their representatives in each state for feedback and revision.

II. Methodology

The following section provides a description of decisions reached based on recommendations from the Data Team for each of the five key indicators. In future years, as additional data are made available and/or reporting requirements change, the measures and contexts in this report should be adjusted as appropriate.

Data were collected from the state teams by RIA, validated and checked for consistency, and then provided to UMDI to calculate the key indicators, as decided upon by the Data Team. Data reporting rules guiding uniform state reporting were developed by the Team as well as the method of calculation for each key indicator. RIA provided a procedural guidebook (located following Appendix B) as well as additional support to states when questions arose. This section provides an overview of those guidelines and describes how each indicator is generated using the state data.

Data Reporting Guidelines

Data on NESSC measures are reported using the most recent federal reporting formats. These groupings are disaggregated by ethnic group (e.g., Hispanic/non-Hispanic) and by gender, race, socioeconomic status, English proficiency status, and disability status. In the 2010-11 school year, federal reporting requirements evolved to include a “multi-racial” identification.

Reporting Students’ Race

In Phase III, states had the option of reporting students as “multi-racial.” States will report multi-racial students as their data systems evolve to include this category. The following describes each state’s reporting preference:

- Connecticut will report multi-racial as multi-racial going forward, as before Phase III they have asked students to select one option under race.
- Maine reports multi-racial as multi-racial—these students are not counted in any other race category.
- New Hampshire reports multi-racial as multi-racial—these students are not counted in any other race category.
- Rhode Island reports multi-racial as multi-racial—these students are not counted in any other race category.
- Vermont includes multi-racial students in each race category in which they self-identified (i.e., some students are counted in more than one category).

To date, the NESSC has combined the data on Asians and Pacific Islanders into one category. While new federal guidelines require these groups to be separated, not all states have moved to this format. For this report states report these students as one category: Asian/Pacific Islander. This categorization will be revisited as it becomes possible to disaggregate reporting.

Reporting Students with Limited English Proficiency (LEP)

Students are identified as LEP if they received services at any time during their secondary school years (Grades 9–12). Students identified as being monitored for services received prior to ninth grade are not included. Maine is the only Consortium state to have a different method of identifying LEP students. In Maine, a student is identified as LEP at the time of graduation. That is, only actively identified LEP students are “counted” for graduation purposes.

Reporting Utilization of Special Education Services

Students are identified as Special Education if they received services or had an Individualized Learning Plan (IEP) at any time during their secondary school years (Grades 9–12). Maine is the only Consortium state that does not conform to this definition. In Maine, a student is identified as receiving Special Education services at the time of graduation. That is, only students with active IEPs and current utilization of services at the time of graduation are “counted” for that subgroup.

Calculation of Key Indicators

The following summary of indicators and specifications reflect the Team’s collective work to refine the metrics that will measure NESSC progress and note existing variations across states. In conjunction with the Team’s “decision rules,” data specification and analysis follows all federal guidelines and the guidelines used by the National Student Clearinghouse (NSC) for reporting post-secondary data when available.

Data were collected by the state data representatives and other members of their respective state teams. This process was coordinated by Research in Action (RIA) which formulated the data request, drawing on forms and information from previous years of Data Team decisions and UMDI coordination. Data were submitted to RIA by the states and checked using a procedure designed by RIA to ensure consistent and accurate data reporting. For more information, RIA’s NESSC Metrics Procedural Guidebook (located following Appendix B), provided to the state data representatives. Data were reviewed by RIA and resubmitted by states in cases in which RIA’s review found inconsistencies. RIA then provided the finalized data to UMDI who calculated the metrics using the formulas decided upon by the Data Team, as detailed below. UMDI presented the data and calculations to the states for final review before publication of this report.

An overview of the key indicators and their methods of calculation follows in chart form.

Key Indicators			
Indicator	Key Decision Points	Method for Reporting	Comments
High School Graduation Rate	The calculation is done with a variation on the National Governors Association (NGA) formula. States will report four-, five-, and six-year rates, freezing the adjusted cohort in Year 4. No exemptions for SpEd or LEP.	$\frac{(\# \text{ of graduating seniors})}{(\# \text{ of first-time freshman} \pm \text{ transfers in or out})}$	<ul style="list-style-type: none"> Data is disaggregated by NCLB categories, including a category for “multi-racial.” Students are referenced in the IEP or LEP statistics if they have been in these groups at any point in their high school career.
High School Dropout Rate	The rate recommended by the Data Team is conceptually similar to the Graduation Rate (see above) supported by the NGA. The rate reflects a count of students who have not graduated from a program aligned with state standards, or are not enrolled.	$\frac{(\# \text{ of students in adjusted freshman cohort}) - (\text{Graduates} + \text{students still enrolled} + \text{other completers of standards-aligned programs})}{\text{Dropouts}}$ $\text{Dropout rate} = \frac{\text{dropouts}}{\text{adjusted freshman cohort}}$	<ul style="list-style-type: none"> In this formula GED completers are listed as dropouts. Dropout rates will be computed and reported with and without including GED completers. GED completers and those students who enroll in college without finishing high school will be reported in this section with a separate table.
Post-Secondary Matriculation Rate	To include matriculation rates at two- and four-year colleges and one-year certificate programs (not currently available). The rates will be calculated for the first two years after high school completion.	$\frac{(\# \text{ of students matriculating})}{(\# \text{ of high school graduates})}$	<ul style="list-style-type: none"> Data is disaggregated by matriculation in college or certificate program and by background as a high school graduate, GED completer, or early enrollment student. The National Student Clearinghouse (NSC) provides data to the Consortium on post-secondary matriculation/completion.
College Readiness	The Team recommended using a variety of measures to provide a composite representation of college readiness.	Composite Measures on College Readiness: <ol style="list-style-type: none"> 1. Completion of 4 Years of Mathematics 2. Completion of Algebra II 3. SAT/ACT Participation Rates 4. Course Completion, Scores in Dual Enrollment/Early College, AP, IB 5. PSAT/SAT/SAT Scores 6. State Assessment Results 7. High School GPA 8. High School Attendance Rate 9. Completion of the Free Application for Federal Student Aid (FAFSA) 	<ul style="list-style-type: none"> This is a difficult construct to capture, as no one measure is consistent across the Consortium. All the measures listed have some bias and must be interpreted as a group. The measure is an adaptation of the original grant measure that called for reporting only attendance in remedial classes.
Post-Secondary Success	The Team decided that students are counted as beginning college when they first matriculate. Success is defined as the proportion of students who graduate within six years of their initial enrollment date.	$\frac{(\# \text{ of students completing their program within six years})}{(\# \text{ of students beginning post-secondary education in target year})}$	<ul style="list-style-type: none"> Completion will be disaggregated by college degree and certificate program. No data source for one-year programs exists at present.

1. Graduation & Completion Rate

Graduation Rate Formulas

4 Year Rate

(# of students graduating in ≤ 4 years + alternative completers) \div (# of first-time freshmen +/- transfers)

5 Year Rate

(# of students graduating in ≤ 5 years + alternative completers) \div (# of first-time freshmen +/- transfers)

6 Year Rate

(# of students graduating in ≤ 6 years + alternative completers) \div (# of first-time freshmen +/- transfers)

Completion Rate Formulas

4 Year Rate

(# of ≤ 4 year graduates + alt. completers + GED completers) \div (# of first-time freshmen +/- transfers)

5 Year Rate

(# of ≤ 5 year graduates + alt. completers + GED completers) \div (# of first-time freshmen +/- transfers)

6 Year Rate

(# ≤ 6 year graduates + alt. completers + GED completers) \div (# of first-time freshmen +/- transfers)

Background

In addition to the common four-year rate, the Consortium will report five- and six-year graduation rates. Reporting these extended rates provides a better representation of high school completion. Whenever possible, to provide the most accurate representation of graduation rates, the graduating cohort (i.e., total number of freshmen +/- transfers) is frozen at the four-year point. As a result, those students graduating in five or six years increase the overall rate of graduation.

Considerations

Significant discussion regarding high school graduates, GED completers, and alternative-program completers led to a more precise definition of “graduate.” Based on 2010 practices in several Consortium states, graduates are defined as those receiving a diploma via a program that meets state standards. Therefore, GED graduates are *not* counted as traditional graduates when data allows for their exclusion.² While GED completers may not have completed a program that has met state standards, it is important to understand how the number of GED completers affects the overall high school *completion rate*. That is, though GED students may not meet state standards for graduation, it is inaccurate to classify them as non-completers. As a result, these students are included in all calculations related to high school *completion rate*.

² Some NESSC states are unable to provide data related to GED completers separately from the overall number of completing students.

2. Dropout Rate

4 Year Rate

Dropouts (including GED completers)

(# students in cohort) - (graduates + students still enrolled + other completers)

Dropouts (not including GED completers)

(# students in cohort) - (graduates + students still enrolled + other completers + GED completers)

4-Year Dropout Rate

Dropouts (with or without GED completers) ÷ # students in cohort

5 Year Rate

Dropouts (including GED completers)

(# students in cohort) - (graduates + students graduating in five years + other completers)

Dropouts (not including GED completers)

(# students in cohort) - (graduates + students graduating in five years + other completers + GED completers)

5-Year Dropout Rate

Dropouts (with or without GED completers) ÷ # students in cohort

Background

The NESSC dropout rate has been developed as suggested by the National Governor's Association (NGA). NGA recommends that dropouts be counted as those students who have not completed high school and are not still in high school. The dropout rate is calculated using the same freshman cohort used for the graduation rate. The Data Team grappled with identifying GED completers as "dropouts," as it could be argued that those students who complete a GED may intend to further their education while those who simply drop out do not. At present, the Team reports these students separately whenever possible.

Based on a number of options, a determination was made by the leadership of the Data Team to produce two different types of dropout rates: 4-Year and 5-Year. Four-year dropouts (a key component of calculating the dropout rate itself) are calculated using the number of students *enrolled* in a fifth year as a component of the formula. Importantly, 5-year dropouts are calculated using the number of students *graduating* in a fifth year as a component of the formula, replacing the number of students enrolled in a fifth year.

As illustrated in the 4-year and 5-year formulas above, the dropout rate calculation is initially set with the assumption that fifth year students may graduate and therefore are excluded from being considered dropouts. One year later, when the number of students graduating in five years becomes available, the students who don't graduate in five years are then treated as dropouts. As a result, the 5-year dropout rates will be higher than the 4-year rates for the same cohorts.

3. Post-Secondary Matriculation

Formula

$$(\# \text{ of students matriculating}) \div (\# \text{ of high school graduates})$$

Background

The post-secondary matriculation rate is calculated based on the number of students who register and attend classes at a degree-granting institution. The National Student Clearinghouse (NSC) has been the only agency to provide detailed information on post-secondary attendance and completion at degree-granting institutions to date. In order to get the most accurate post-secondary attendance data available all Consortium states have developed data agreements with NSC for NESSC reporting purposes.

Students from the 4-year cohorts may finish school early, or within four, five, or six years. Those who enroll by October 1st following their fourth year of high school are counted within “Immediate Enrollment.” Those that enroll from 16 months to 2 academic years after their fourth year of high school are considered enrolled “At a Later Date”:

Immediate Enrollment in Post-Secondary

The Data Team identifies students as part of the “Immediate Enrollment” subgroup when the student is enrolled in a two- or four-year post-secondary institution with an enrollment status of full-time, half-time, or less-than-half-time in the fall semester immediately following graduation. The fall semester immediately following graduation is defined as any term that begins before October 1st of the graduation year and ends after October 1st of the graduation year. Therefore, the student must be enrolled by October 1st AND for at least 10 days.

Enrollment in Post-Secondary at a Later Date

The Data Team identifies students as part of the “At a Later Date” subgroup when the student is enrolled in a two- or four-year post-secondary institution with an enrollment status of full-time, half-time or less-than-half-time between October 2nd of the fall immediately following graduation and August 15th of the second summer following high school graduation. This period includes the fall and spring academic terms in the year following graduation as well as terms ending in the subsequent academic year (including all semesters, quarters, trimesters, and periodic collegiate terms within the two-year window). Therefore, the student must be enrolled by August 15th, two academic years post-high school graduation, AND be enrolled for at least 10 days.

The “Immediate Enrollment” metric has a caveat of at least 10 days. The “At a Later Date Enrollment” metric extends the enrollment period from a 16-month window to two full academic years following graduation.

4. College Readiness

Background

While originally conceptualized as the percentage of students entering college without the need for remedial coursework, further investigation into this indicator revealed that remedial coursework is not an accurate proxy for readiness. Not all institutions offer remedial courses, the basic competencies required to enroll in introductory courses without remediation varies, and the definition of and level of rigor across remedial offerings varies.

To date, there is no region-wide, reliable measure of college readiness. The Data Team has spent a considerable amount of time researching and discussing the most appropriate data to consider for inclusion in this indicator. In conjunction with partners from higher education and data consultants and a collective review of the research, the Team drafted an index of nine measures for usage in determining college readiness:

1. Completion of 4 Years of Mathematics
2. Completion of Algebra II
3. SAT/ACT Participation Rates
4. Course Completion and Scores from Dual Enrollment/Early College, Advanced Placement, and/or International Baccalaureate
5. PSAT/SAT Scores
6. State Assessment Results
7. High School GPA
8. High School Attendance Rate
9. Completion of the Free Application for Federal Student Aid (FAFSA)

In order to calculate college readiness using the nine identified measures, the group determined data would be analyzed at the student level and aggregated as percentages at school and state levels for publication. The correlation between these measures and post-secondary success is currently under investigation by the Data Team and therefore data related to this indicator is not currently being collected.

5. Post-Secondary Success

Formula

$$(\text{\# of students completing post-secondary programs within six years}) \div (\text{freshman college cohort})^3$$

Background

In order to account for graduates who do not enroll in post-secondary education immediately following their high school, as well as those who require more than four years to complete their coursework, the formula for calculating post-secondary success is based on the number of students who attend post-secondary school at any time and graduate within six years.

Considerations

While the six-year period for reporting post-secondary completion is appropriate for four-year college programs, other non-baccalaureate programs (such as one-year certificate programs and two-year associate degrees) may be misrepresented by such a long period for completion. As data on these programs become available, NESSC will work in conjunction with NSC to develop appropriate formulas for assessing successful programs. So far there has only been enough time for the Class of 2009 on-time (4-year) graduates who enrolled immediately in a 2-year college to complete their post-secondary studies. These numbers are available in the tables within this report, but in subsequent years these figures will likely rise as those students who delayed matriculation or finished high school later increase the total number of students from their cohort finishing college. Data on graduation from 4-year post-secondary programs will first be available two years from now and will rise within each cohort in following years as students with extended educational pathways matriculate and complete college on a longer timeline.

³ Post-secondary success for students who enroll in one-year/certificate programs will be calculated using a similar formula as data become available.

III. Key Indicators

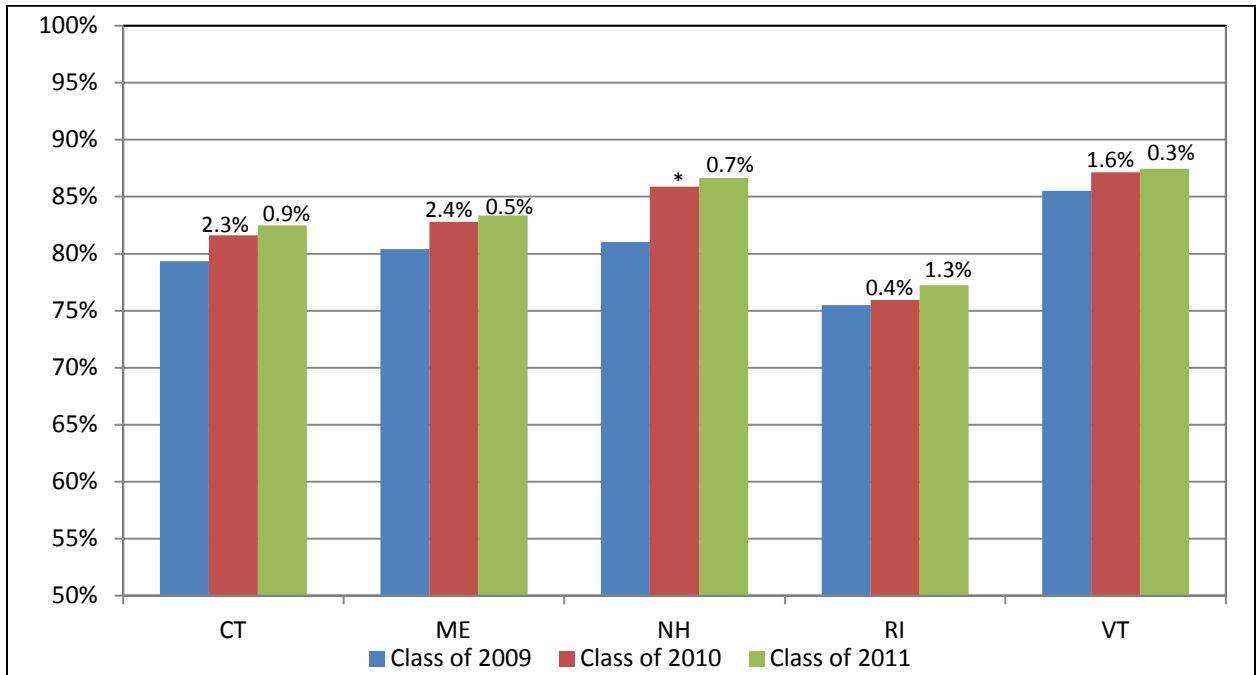
Progress Toward 2016 Goals

The NESSC indicators reported represent the hard work and dedication of the Data Team and others who responded to data requests within the five consortium states. The majority of states provided the complete set of graduation, dropout, and post-secondary data required to establish initial progress toward the 2016 goals.

The data trends are positive. Over the past two years all states have been making gains in increasing graduation rates and decreasing dropout rates. Four of the five states show an increase in post-secondary enrollment, and the fifth was practically level.

The following charts show 4-year graduation and dropout rates and post-secondary enrollment of Consortium states of students from the class years 2009, 2010, and 2011. Five-year graduation and dropout rates are also represented for the students from the class years 2009 and 2010.

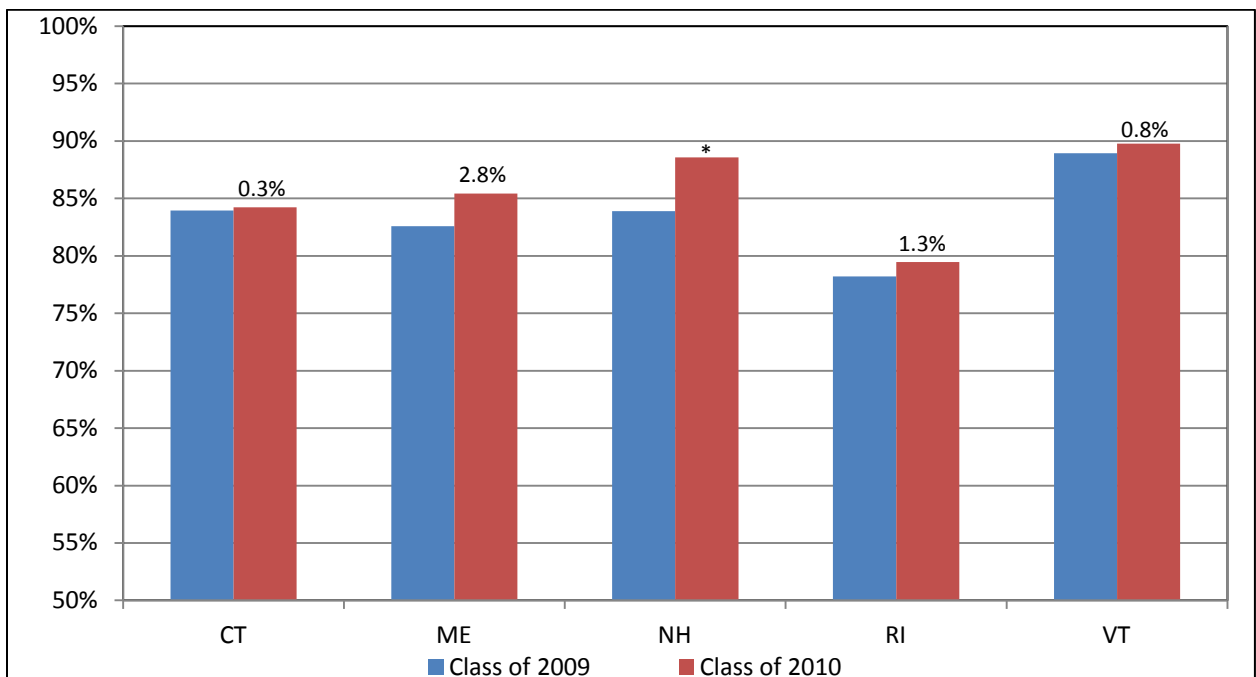
NESSC 4-Year Graduation Rates



*Change presented is percentage point change.

*Class of 2009 data in New Hampshire was estimated, so no calculation of change from 2009 to 2010 is presented.

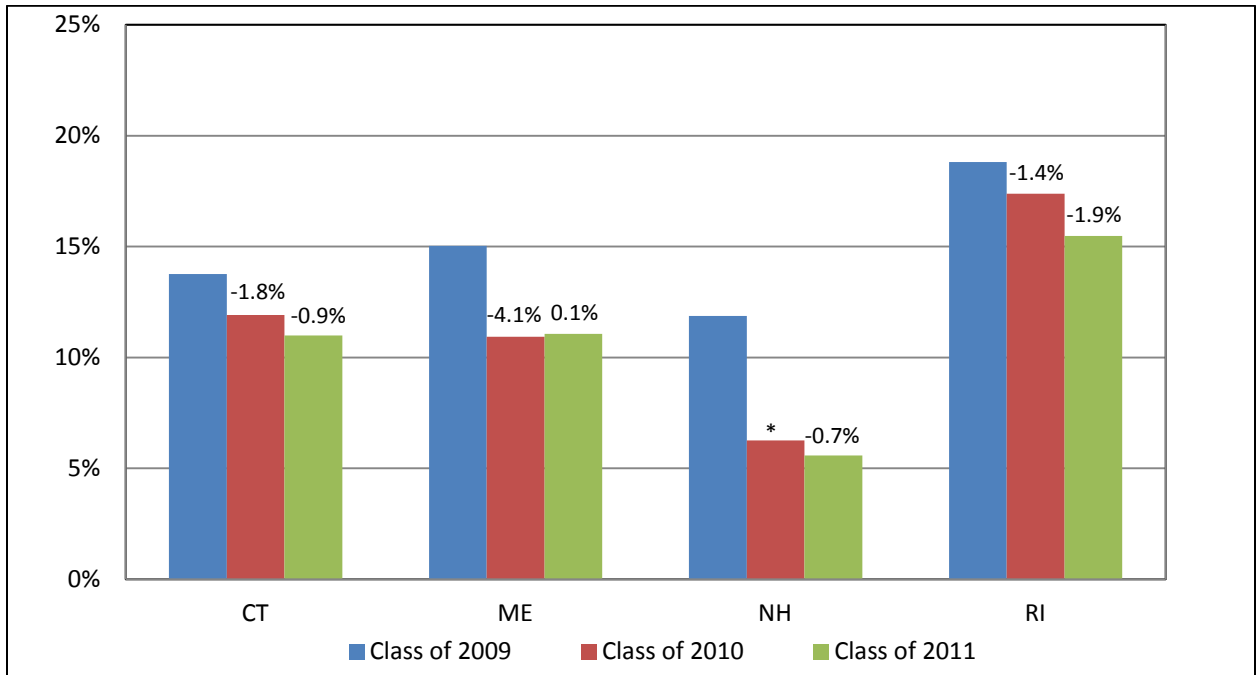
NESSC 5-Year Graduation Rates



*Change presented is percentage point change.

*Class of 2009 data in New Hampshire was estimated, so no calculation of change from 2009 to 2010 is presented.

NESSC 4-Year Cohort Dropout Rates



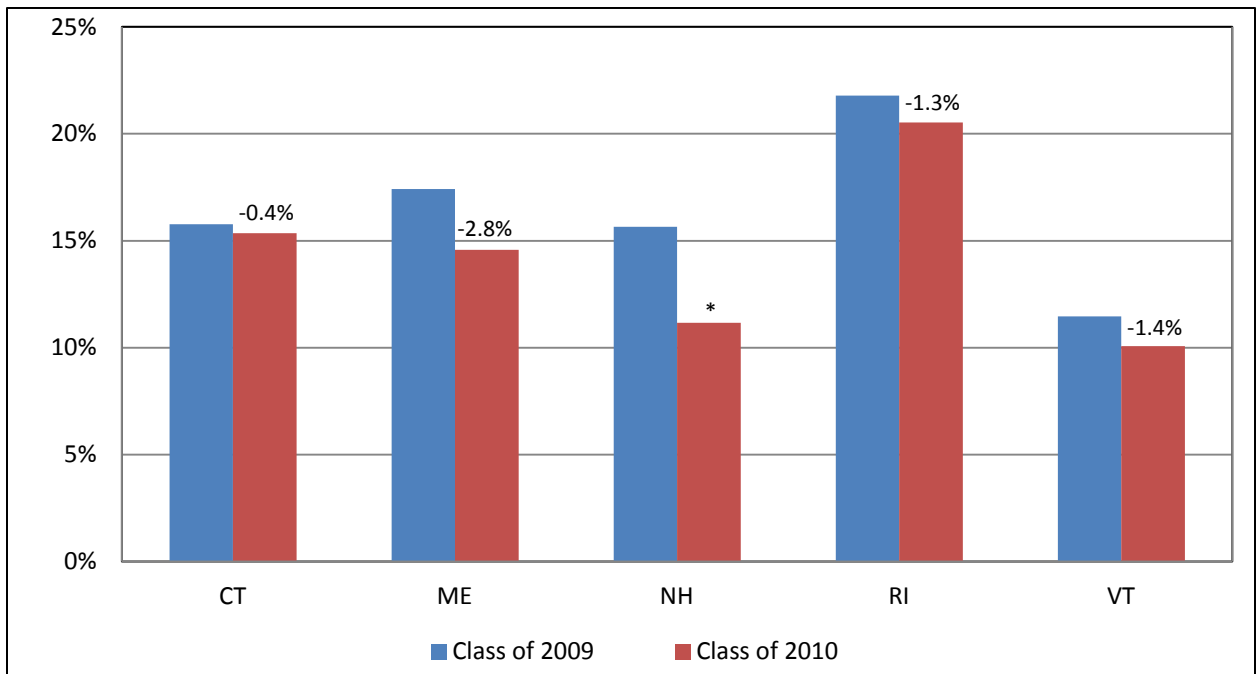
*Change presented is percentage point change.

*4-year dropout rates not available for Vermont due to differences in data reporting.

*Class of 2009 data in New Hampshire was estimated, so no calculation of change from 2009 to 2010 is presented.

*GEDs grouped with dropouts because not all states are able to identify number of GEDs.

NESSC 5-Year Cohort Dropout Rates

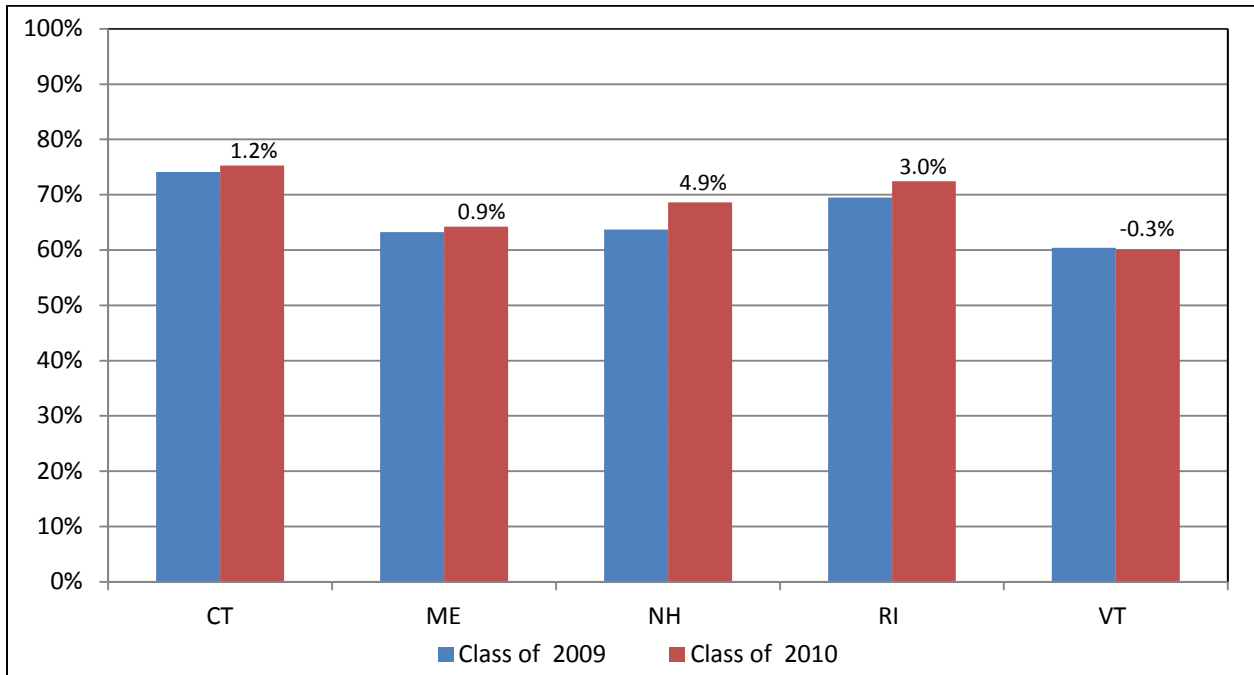


*Change presented is percentage point change.

*Class of 2009 data in New Hampshire was estimated, so no calculation of change from 2009 to 2010 is presented.

*GEDs grouped with dropouts because not all states are able to separately identify GEDs.

NESSC Post-Secondary Matriculation Rates



*Change presented is percentage point change.

*Post-secondary data in Maine attained in a manner not comparable to other states.

Subgroup Analysis

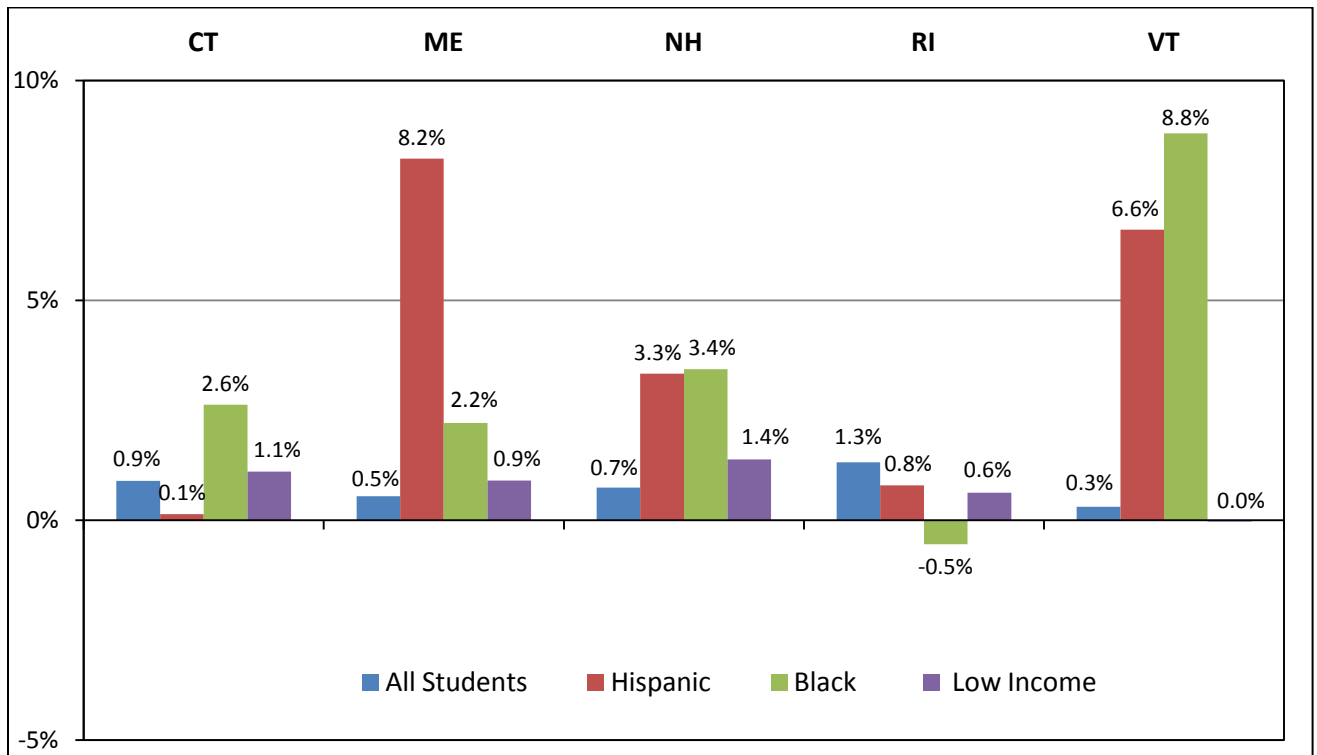
The NESSC strategic plan includes targets for the selected subgroups of low income students, black students, and Hispanic students. Following are graphs of the most recent 4-year and 5-year graduation and dropout rate data as well as post-secondary enrollment for students in these subgroups. Full data is available in the tables provided later in the report.

Overall, state data show improvement among low income students, black students, and Hispanic students with very few exceptions. In some cases, the percentage point change of these subgroups outperforms the average change among all students. Occasionally, some state data indicate a loss in relation to specific subgroups. It is important to note that subgroups that contain a relatively small number of students create a volatile environment for calculating averages and should be interpreted with caution.

The following charts show percentage point change in graduation rates, dropout rates, and post-secondary enrollment for selected subgroups in each NESSC state for class years 2009, 2010, and 2011, plus average percentage point change for all students.

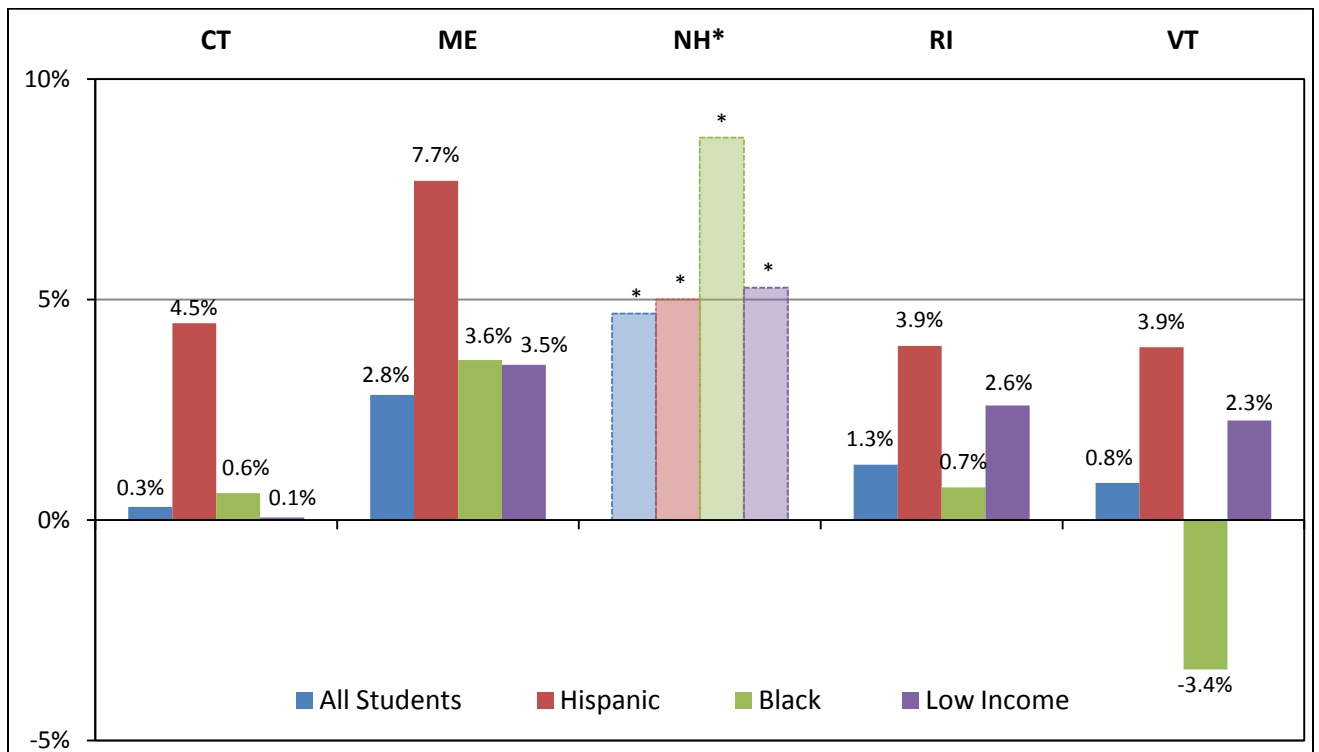
4-Year Graduation Rates

Selected Subgroups, Percentage Point Change from 2010 to 2011



5-Year Graduation Rates

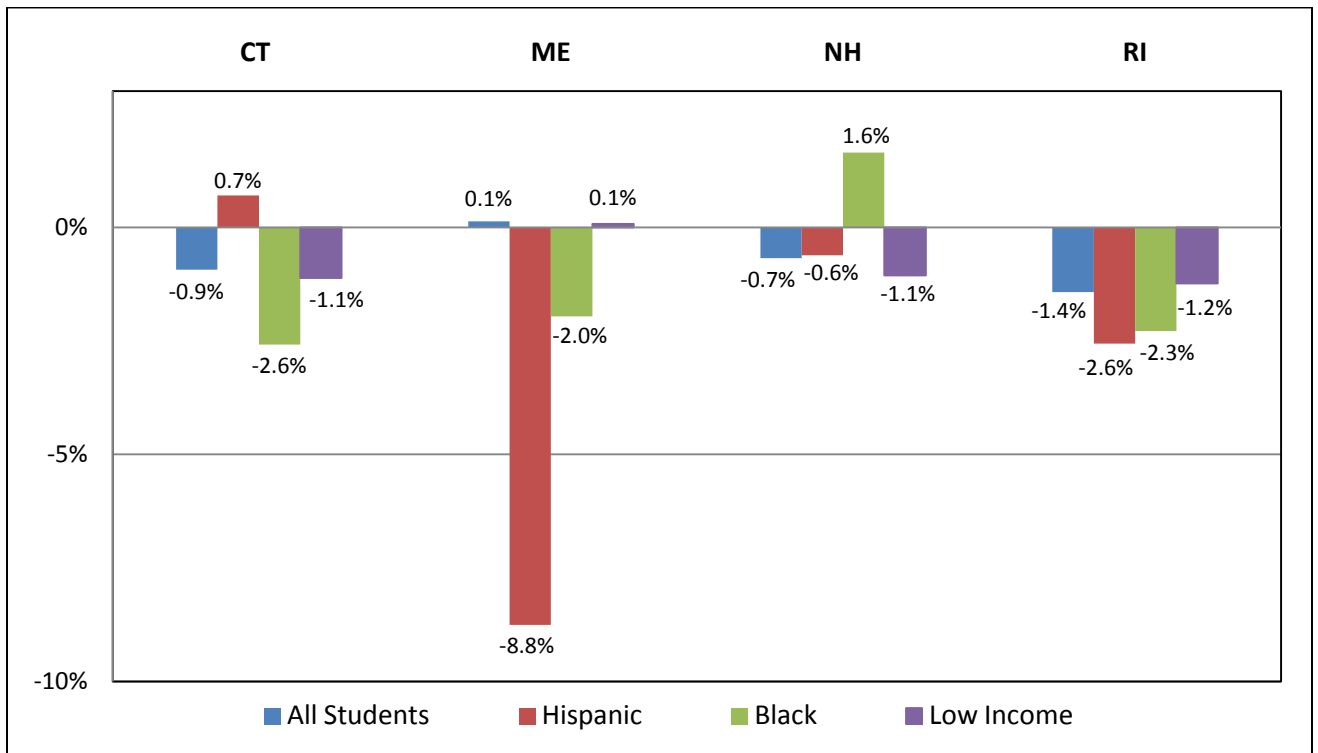
Selected Subgroups, Percentage Point Change from 2009 to 2010



*Class of 2009 data in New Hampshire was estimated, so no calculation of change from 2009 to 2010 is presented.

4-Year Dropout Rates

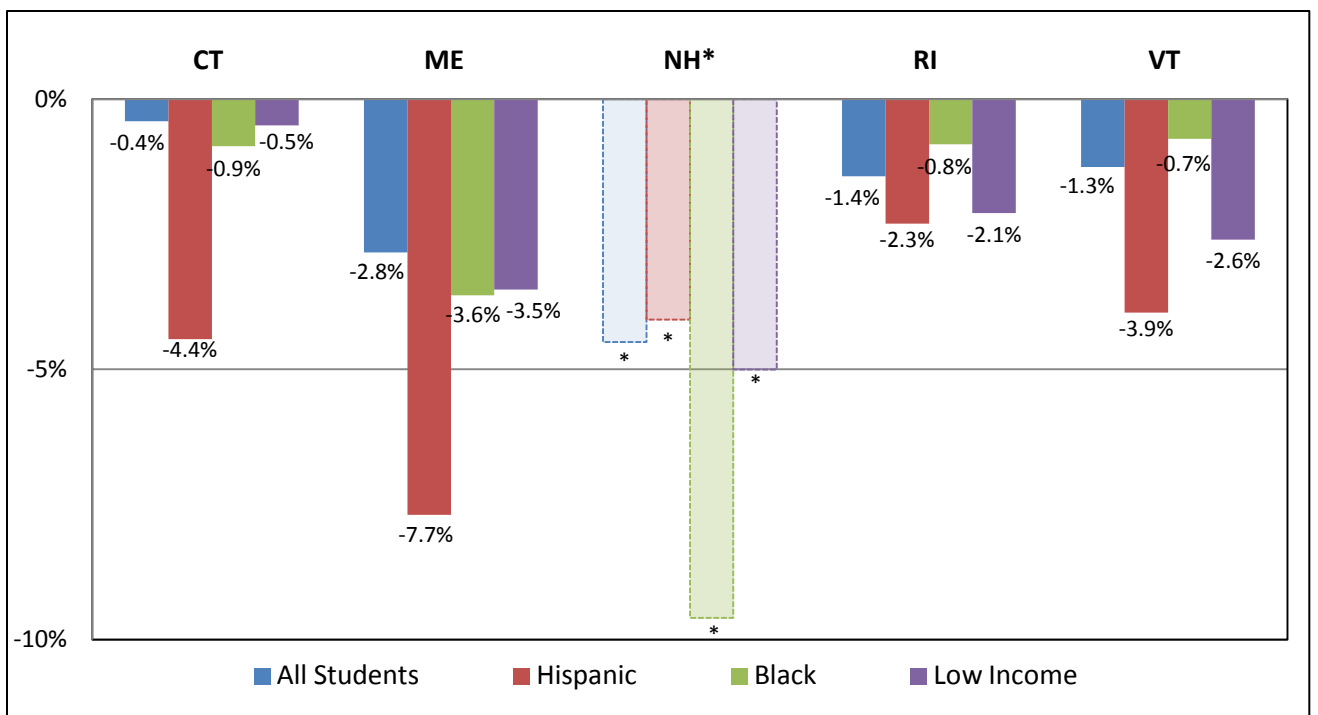
Selected Subgroups, Percentage Point Change from 2010 to 2011



*4-year dropout rates not available for Vermont due to differences in data reporting.

5-Year Dropout Rates

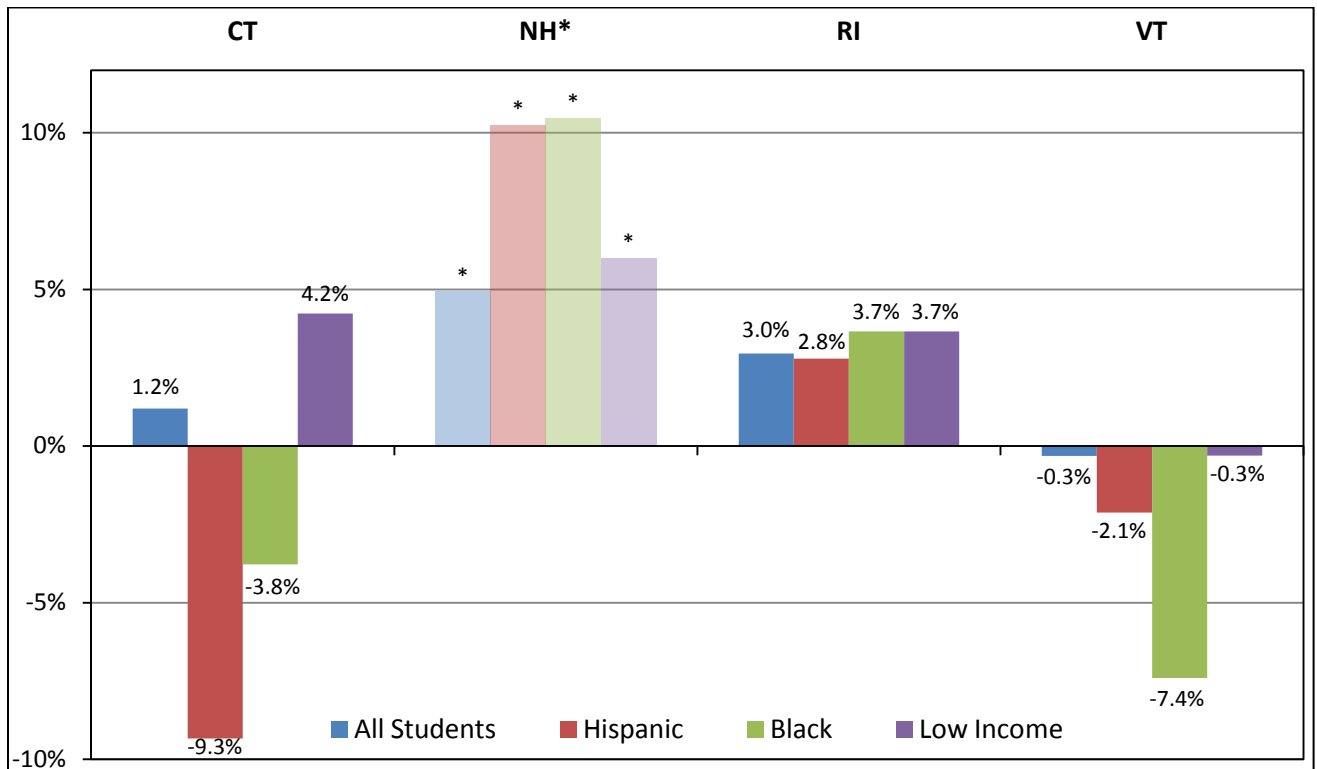
Selected Subgroups, Percentage Point Change from 2009 to 2010



*Class of 2009 data in New Hampshire was estimated, so no calculation of change from 2009 to 2010 is presented.

Post-Secondary Enrollment

Selected Subgroups, Percentage Point Change from 2009 to 2010



*Class of 2009 data in New Hampshire was estimated, so no calculation of change from 2009 to 2010 is presented.

*Maine post-secondary subgroup data not yet available.

Limitations of the Data

At this time, the Team submits data for calculation at the state level rather than the district, school, or student level. State aggregation of the data does not allow for analysis or reporting of data across multiple characteristics (e.g., white males, LEP females, students of Hispanic origin with Individual Education Plans, etc.). Without student-level data, it is impossible to disaggregate by the multiple characteristics for which the data is collected. While the Data Team acknowledged this as a limitation, their ability to share data at the student level is limited by the legality associated with sharing individually identifiable data across state lines. To compensate for this limitation, all states agreed to analyze data at the student level within their home states, as requested by NESSC leadership. Small numbers in subgroups makes it prudent to interpret subgroup analysis with caution.

The data reported provides a snapshot of each state’s progress in relation to the NESSC’s 2016 goals. Given that the variation in data calculations and reporting beyond what is federally defined and documented within this report, as well as the level of data reported (i.e., the state level), the gains and losses reported across the states have not been analyzed to determine statistical significance. Additionally, the extent to which these gains can be attributed specifically to the work of the NESSC is potentially limited by a lag in effects, while interventions underway at the district and school levels in each of the states may also be contributing to student success.

Data Key

The following key can be used to interpret acronyms/notes within the data tables that follow.

Acronym/Note	Definition
-	At this time, the state does not report data for this category.
NA	At the time of reporting, data related to this category was <u>not available</u> , or is <u>not yet relevant</u> .
**	Data suppressed as the small number of students included (less than or equal to ten) could result in individual student identification.

Data Notes

- Calculated change is year-on-year percentage point change.
- Not all data was available for all measures in all states. Data that was not available is marked as such.
- Vermont data from class of 2009 and class of 2010 represents a revision, as private schools are now excluded from all reported data. In previous data reports, private schools had been included. Fifth year enrollment data is not available in Vermont. Therefore it is not possible to calculate 4-year graduation rates based on this data.
- New Hampshire class of 2009 cohort data is estimated, therefore it is not possible to calculate a measurement of real change between 2009 and 2010.
- Maine data on GED completers is not currently available, therefore it is not possible to calculate dropout rates with GEDs as graduates in Maine. Maine post-secondary data was attained in a manner not comparable to other states.
- Some subgroup data depends on a very small number of students and should therefore be interpreted with caution.

Connecticut

4-Year Graduation Rate																
	All Students	Male	Female	Hispanic	Non-Hispanic	White	Black	Native American	Asian/Pacific Islander	Multi-Racial	F/R Lunch Eligible	Not F/R Lunch Eligible	LEP	Not LEP	IEP	Not IEP
Class of 2009	79.3%	75.9%	83.0%	58.0%	83.2%	86.9%	66.2%	73.8%	82.4%	–	59.9%	85.9%	53.4%	80.7%	61.3%	81.7%
Class of 2010	81.6%	78.3%	85.1%	63.6%	84.9%	88.5%	68.2%	72.4%	88.5%	–	62.4%	88.2%	58.9%	82.7%	61.9%	84.2%
Class of 2011	82.5%	79.3%	85.9%	63.7%	86.1%	89.3%	70.8%	70.6%	92.2%	–	63.5%	89.3%	61.2%	83.5%	62.4%	85.1%
Change 2009-10	2.3%	2.4%	2.1%	5.6%	1.8%	1.6%	2.0%	-1.4%	6.1%	–	2.5%	2.3%	5.6%	2.0%	0.5%	2.5%
Change 2010-11	0.9%	1.0%	0.8%	0.1%	1.1%	0.8%	2.6%	-1.8%	3.7%	–	1.1%	1.1%	2.3%	0.8%	0.6%	0.9%

5-Year Graduation Rate																
	All Students	Male	Female	Hispanic	Non-Hispanic	White	Black	Native American	Asian/Pacific Islander	Multi-Racial	F/R Lunch Eligible	Not F/R Lunch Eligible	LEP	Not LEP	IEP	Not IEP
Class of 2009	83.9%	81.0%	87.0%	64.0%	87.5%	91.0%	71.9%	78.5%	85.3%	–	67.1%	89.7%	58.2%	85.3%	71.5%	85.6%
Class of 2010	84.2%	81.7%	86.9%	68.5%	87.2%	90.3%	72.6%	76.6%	89.9%	–	67.2%	90.1%	64.1%	85.2%	68.3%	86.3%
Change 2009-10	0.3%	0.7%	-0.1%	4.5%	-0.4%	-0.7%	0.6%	-2.0%	4.6%	–	0.1%	0.5%	6.0%	-0.1%	-3.1%	0.7%

6-Year Graduation Rate																
	All Students	Male	Female	Hispanic	Non-Hispanic	White	Black	Native American	Asian/Pacific Islander	Multi-Racial	F/R Lunch Eligible	Not F/R Lunch Eligible	LEP	Not LEP	IEP	Not IEP
Class of 2009	84.7%	82.0%	87.5%	65.3%	88.2%	91.6%	73.2%	80.4%	85.9%	–	68.6%	90.2%	59.2%	86.0%	75.4%	85.9%

Dropout Rate (GEDs counted as Dropouts, 5-Year Rate)																
	All Students	Male	Female	Hispanic	Non-Hispanic	White	Black	Native American	Asian/Pacific Islander	Multi-Racial	F/R Lunch Eligible	Not F/R Lunch Eligible	LEP	Not LEP	IEP	Not IEP
Class of 2009	15.8%	18.5%	12.9%	35.5%	12.2%	8.9%	27.2%	21.5%	14.7%	–	32.0%	10.3%	**	14.4%	28.0%	14.2%
Class of 2010	15.4%	17.6%	13.0%	31.0%	12.5%	9.5%	26.3%	23.4%	10.0%	–	31.5%	9.8%	35.9%	14.4%	30.9%	13.3%
Change 2009-10	-0.4%	-0.9%	0.1%	-4.4%	0.3%	0.6%	-0.9%	2.0%	-4.7%	–	-0.5%	-0.5%	**	0.0%	2.9%	-0.8%

Connecticut Continued

Dropout Rate (GEDs counted as Graduates, 5-Year Rate)																
	All Students	Male	Female	Hispanic	Non-Hispanic	White	Black	Native American	Asian/Pacific Islander	Multi-Racial	F/R Lunch Eligible	Not F/R Lunch Eligible	LEP	Not LEP	IEP	Not IEP
Class of 2009	15.4%	18.1%	12.5%	35.0%	11.9%	8.6%	26.4%	21.5%	14.7%	–	31.2%	10.1%	**	14.1%	27.6%	13.8%
Class of 2010	14.9%	17.2%	12.6%	30.5%	12.1%	9.2%	25.5%	22.8%	9.9%	–	30.6%	9.5%	35.6%	14.0%	30.4%	12.9%
Change 2009-10	-0.5%	-1.0%	0.1%	-4.5%	0.2%	0.6%	-0.9%	1.3%	-4.7%	–	-0.5%	-0.5%	**	-0.1%	2.8%	-0.9%

4-Year Dropout Rate (GEDs counted as Dropouts)																
	All Students	Male	Female	Hispanic	Non-Hispanic	White	Black	Native American	Asian/Pacific Islander	Multi-Racial	F/R Lunch Eligible	Not F/R Lunch Eligible	LEP	Not LEP	IEP	Not IEP
Class of 2009	13.8%	15.3%	12.1%	32.1%	10.4%	7.7%	22.7%	18.7%	13.4%	–	28.2%	8.9%	**	12.5%	18.6%	13.1%
Class of 2010	11.9%	13.1%	10.7%	24.5%	9.6%	7.3%	20.1%	20.7%	8.0%	–	24.3%	7.6%	30.1%	11.1%	16.0%	11.4%
Class of 2011	11.0%	11.9%	10.0%	25.2%	8.3%	6.3%	17.5%	22.9%	4.4%	–	23.2%	6.6%	26.6%	10.3%	15.4%	10.4%
Change 2009-10	-1.8%	-2.2%	-1.4%	-7.5%	-0.9%	-0.4%	-2.6%	2.0%	-5.4%	–	-3.8%	-1.2%	**	-1.4%	-2.6%	-1.7%
Change 2010-11	-0.9%	-1.1%	-0.7%	0.7%	-1.3%	-1.0%	-2.6%	2.2%	-3.6%	–	-1.1%	-1.0%	-3.5%	-0.8%	-0.6%	-1.0%

4-Year Dropout Rate (GEDs counted as Graduates)																
	All Students	Male	Female	Hispanic	Non-Hispanic	White	Black	Native American	Asian/Pacific Islander	Multi-Racial	F/R Lunch Eligible	Not F/R Lunch Eligible	LEP	Not LEP	IEP	Not IEP
Class of 2009	13.4%	14.9%	11.8%	31.6%	10.1%	7.4%	21.9%	18.7%	13.4%	–	27.3%	8.7%	**	12.1%	18.2%	12.8%
Class of 2010	11.5%	12.6%	10.3%	24.0%	9.2%	7.0%	19.3%	20.0%	8.0%	–	23.5%	7.4%	29.8%	10.7%	15.6%	11.0%
Class of 2011	10.6%	11.5%	9.7%	24.7%	7.9%	5.9%	17.2%	20.3%	4.2%	–	22.3%	6.4%	26.4%	9.9%	15.1%	10.0%
Change 2009-10	-1.9%	-2.3%	-1.5%	-7.6%	-0.9%	-0.4%	-2.6%	1.3%	-5.5%	–	-3.9%	-1.3%	**	-1.4%	-2.7%	-1.8%
Change 2010-11	-0.9%	-1.2%	-0.6%	0.7%	-1.3%	-1.0%	-2.2%	0.3%	-3.8%	–	-1.2%	-1.0%	-3.4%	-0.8%	-0.4%	-1.0%

Post-Secondary Enrollment Rate																
	All Students	Male	Female	Hispanic	Non-Hispanic	White	Black	Native American	Asian/Pacific Islander	Multi-Racial	F/R Lunch Eligible	Not F/R Lunch Eligible	LEP	Not LEP	IEP	Not IEP
Class of 2009	74.1%	69.8%	78.4%	62.7%	75.6%	79.6%	61.7%	64.0%	77.3%	–	53.4%	79.5%	27.4%	75.7%	38.3%	79.7%
Class of 2010	75.3%	70.5%	80.0%	53.4%	78.5%	81.5%	57.9%	70.3%	90.1%	–	57.7%	79.8%	24.0%	77.1%	44.9%	78.4%
Change 2009-10	1.2%	0.7%	1.7%	-9.3%	2.9%	1.9%	-3.8%	6.3%	12.8%	–	4.2%	0.4%	-3.4%	1.3%	6.5%	-1.3%

2-Year College Post-Secondary Graduation																
	All Students	Male	Female	Hispanic	Non-Hispanic	White	Black	Native American	Asian/Pacific Islander	Multi-Racial	F/R Lunch Eligible	Not F/R Lunch Eligible	LEP	Not LEP	IEP	Not IEP
Class of 2009	392	179	213	42	350	297	37	**	15	–	79	313	**	**	28	364

Maine

4-Year Graduation Rate																
	All Students	Male	Female	Hispanic	Non-Hispanic	White	Black	Native American	Asian/Pacific Islander	Multi-Racial	F/R Lunch Eligible	Not F/R Lunch Eligible	LEP	Not LEP	IEP	Not IEP
Class of 2009	80.4%	77.8%	83.1%	71.2%	80.5%	80.8%	71.2%	65.4%	83.7%	–	68.2%	85.7%	77.4%	80.4%	64.7%	83.1%
Class of 2010	82.8%	80.4%	85.4%	77.1%	82.9%	83.2%	72.6%	67.2%	88.3%	–	71.0%	88.5%	79.6%	82.9%	65.1%	85.9%
Class of 2011	83.4%	80.7%	86.1%	85.4%	83.3%	83.4%	74.8%	80.5%	90.2%	84.2%	71.9%	92.6%	76.1%	83.5%	65.0%	87.3%
Change 2009-10	2.4%	2.7%	2.2%	5.9%	2.4%	2.4%	1.4%	1.8%	4.6%	–	2.8%	2.9%	2.2%	2.4%	0.3%	2.8%
Change 2010-11	0.5%	0.3%	0.8%	8.2%	0.5%	0.3%	2.2%	13.4%	2.0%	–	0.9%	4.0%	-3.5%	0.6%	0.0%	1.4%

5-Year Graduation Rate																
	All Students	Male	Female	Hispanic	Non-Hispanic	White	Black	Native American	Asian/Pacific Islander	Multi-Racial	F/R Lunch Eligible	Not F/R Lunch Eligible	LEP	Not LEP	IEP	Not IEP
Class of 2009	82.6%	80.6%	84.7%	75.2%	82.6%	82.9%	75.0%	68.5%	84.5%	–	75.2%	85.8%	77.4%	82.7%	70.1%	84.7%
Class of 2010	85.4%	83.8%	87.2%	82.9%	85.4%	85.7%	78.6%	70.1%	90.0%	–	78.8%	88.6%	79.8%	85.5%	72.3%	87.7%
Change 2009-10	2.8%	3.2%	2.5%	7.7%	2.8%	2.8%	3.6%	1.6%	5.6%	–	3.5%	2.9%	2.5%	2.9%	2.2%	3.0%

6-Year Graduation Rate																
	All Students	Male	Female	Hispanic	Non-Hispanic	White	Black	Native American	Asian/Pacific Islander	Multi-Racial	F/R Lunch Eligible	Not F/R Lunch Eligible	LEP	Not LEP	IEP	Not IEP
Class of 2009	82.8%	80.9%	84.8%	75.2%	82.9%	83.1%	76.5%	70.0%	84.9%	–	76.1%	85.8%	77.4%	82.9%	70.9%	84.9%

Dropout Rate (5-Year Rate)*																
	All Students	Male	Female	Hispanic	Non-Hispanic	White	Black	Native American	Asian/Pacific Islander	Multi-Racial	F/R Lunch Eligible	Not F/R Lunch Eligible	LEP	Not LEP	IEP	Not IEP
Class of 2009	17.4%	19.4%	15.3%	24.8%	17.4%	17.1%	25.0%	31.5%	15.5%	–	24.8%	14.2%	22.6%	17.3%	29.9%	15.3%
Class of 2010	14.6%	16.2%	12.8%	17.1%	14.6%	14.3%	21.4%	29.9%	10.0%	–	21.2%	11.4%	20.2%	14.5%	27.7%	12.3%
Change 2009-10	-2.8%	-3.2%	-2.5%	-7.7%	-2.8%	-2.8%	-3.6%	-1.6%	-5.6%	–	-3.5%	-2.9%	-2.5%	-2.9%	-2.2%	-3.0%

*GED figures were not submitted separately, therefore GED inclusion is unknown; GED completers therefore had to be grouped with dropouts.

Maine Continued

4-Year Dropout Rate*																
	All Students	Male	Female	Hispanic	Non-Hispanic	White	Black	Native American	Asian/Pacific Islander	Multi-Racial	F/R Lunch Eligible	Not F/R Lunch Eligible	LEP	Not LEP	IEP	Not IEP
Class of 2009	15.0%	16.4%	13.5%	20.9%	15.0%	14.8%	NA	26.9%	12.7%	–	23.4%	11.4%	15.5%	15.0%	23.7%	13.5%
Class of 2010	10.9%	11.5%	10.3%	13.1%	10.9%	10.8%	11.9%	26.3%	6.8%	–	18.5%	7.2%	9.4%	11.0%	18.2%	9.7%
Class of 2011	11.1%	12.5%	9.5%	4.4%	11.1%	11.3%	9.9%	10.2%	2.4%	–	18.6%	5.0%	10.9%	11.1%	19.2%	9.3%
Change 2009-10	-4.1%	-4.9%	-3.2%	-7.8%	-4.1%	-4.0%	NA	-0.6%	-6.0%	–	-4.9%	-4.2%	-6.1%	-4.1%	-5.5%	-3.9%
Change 2010-11	0.1%	1.0%	-0.8%	-8.8%	0.2%	0.5%	-2.0%	-16.1%	-4.3%	–	0.1%	-2.3%	1.5%	0.1%	1.0%	-0.4%

*GED figures were not submitted separately, therefore GED inclusion is unknown; GED completers therefore had to be grouped with dropouts.

Post-Secondary Enrollment Rate																
	All Students	Male	Female	Hispanic	Non-Hispanic	White	Black	Native American	Asian/Pacific Islander	Multi-Racial	F/R Lunch Eligible	Not F/R Lunch Eligible	LEP	Not LEP	IEP	Not IEP
Class of 2009	63.3%	NA	NA	NA	NA	NA	NA	NA	NA	–	NA	NA	NA	NA	NA	NA
Class of 2010	64.2%	NA	NA	NA	NA	NA	NA	NA	NA	–	NA	NA	NA	NA	NA	NA
Change 2009-10	0.9%	NA	NA	NA	NA	NA	NA	NA	NA	–	NA	NA	NA	NA	NA	NA

*Note: Maine post-secondary data obtained in a manner not comparable to other states. In addition, detailed subgroup data is not currently available for Maine.

2-Year College Post-Secondary Graduation																
	All Students	Male	Female	Hispanic	Non-Hispanic	White	Black	Native American	Asian/Pacific Islander	Multi-Racial	F/R Lunch Eligible	Not F/R Lunch Eligible	LEP	Not LEP	IEP	Not IEP
Class of 2009	262	NA	NA	NA	NA	NA	NA	NA	NA	–	NA	NA	NA	NA	NA	NA

*Note: Maine post-secondary data obtained in a manner not comparable to other states. In addition, detailed subgroup data is not currently available for Maine.

New Hampshire

4-Year Graduation Rate																
	All Students	Male	Female	Hispanic	Non-Hispanic	White	Black	Native American	Asian/Pacific Islander	Multi-Racial	F/R Lunch Eligible	Not F/R Lunch Eligible	LEP	Not LEP	IEP	Not IEP
Class of 2009	81.0%	78.2%	84.0%	63.2%	81.6%	81.9%	62.6%	57.6%	89.3%	66.7%	65.7%	85.2%	66.7%	81.3%	67.9%	83.7%
Class of 2010	85.9%	82.7%	89.2%	70.1%	86.4%	86.6%	70.6%	73.3%	88.8%	86.2%	71.3%	90.3%	71.6%	86.2%	71.6%	88.9%
Class of 2011	86.6%	83.8%	89.6%	73.4%	87.1%	87.4%	74.1%	77.8%	87.6%	86.5%	72.7%	91.4%	73.1%	86.9%	71.1%	89.9%
Change 2009-10	4.9%	4.5%	5.1%	6.9%	4.8%	4.7%	8.0%	15.7%	-0.5%	19.5%	5.6%	5.1%	5.0%	4.9%	3.7%	5.2%
Change 2010-11	0.7%	1.1%	0.4%	3.3%	0.7%	0.8%	3.4%	4.4%	-1.2%	0.3%	1.4%	1.1%	1.5%	0.7%	-0.4%	1.0%

5-Year Graduation Rate																
	All Students	Male	Female	Hispanic	Non-Hispanic	White	Black	Native American	Asian/Pacific Islander	Multi-Racial	F/R Lunch Eligible	Not F/R Lunch Eligible	LEP	Not LEP	IEP	Not IEP
Class of 2009	83.9%	81.0%	87.0%	64.0%	87.5%	91.0%	71.9%	78.5%	85.3%	NA	67.1%	89.7%	58.2%	85.3%	71.5%	85.6%
Class of 2010	88.6%	85.9%	91.3%	75.7%	88.9%	89.1%	78.2%	75.6%	91.6%	93.8%	76.8%	92.1%	80.2%	88.7%	76.6%	91.1%
Change 2009-10	4.7%	4.4%	4.9%	5.0%	4.7%	4.6%	8.7%	11.1%	0.9%	16.1%	5.3%	4.9%	4.5%	4.7%	2.8%	5.2%

6-Year Graduation Rate																
	All Students	Male	Female	Hispanic	Non-Hispanic	White	Black	Native American	Asian/Pacific Islander	Multi-Racial	F/R Lunch Eligible	Not F/R Lunch Eligible	LEP	Not LEP	IEP	Not IEP
Class of 2009	NA	NA	NA	NA	NA	NA	NA	NA	NA	NA	NA	NA	NA	NA	NA	NA

*6-year graduation rate data not yet available in New Hampshire.

Dropout Rate (GEDs counted as Dropouts, 5-Year Rate)																
	All Students	Male	Female	Hispanic	Non-Hispanic	White	Black	Native American	Asian/Pacific Islander	Multi-Racial	F/R Lunch Eligible	Not F/R Lunch Eligible	LEP	Not LEP	IEP	Not IEP
Class of 2009	15.7%	17.9%	13.2%	28.0%	15.3%	15.1%	29.8%	35.6%	7.7%	22.2%	27.7%	12.4%	23.3%	15.5%	25.1%	13.8%
Class of 2010	11.2%	13.8%	8.4%	23.9%	10.8%	10.7%	20.2%	24.4%	6.7%	4.6%	22.7%	7.6%	18.0%	11.0%	22.7%	8.7%
Change 2009-10	-4.5%	-4.1%	-4.8%	-4.1%	-4.5%	-4.4%	-9.6%	-11.1%	-1.0%	-17.6%	-5.0%	-4.7%	-5.3%	-4.5%	-2.4%	-5.0%

New Hampshire Continued

Drop Out Rate (GEDs counted as Graduates, 5-Year Rate)																
	All Students	Male	Female	Hispanic	Non-Hispanic	White	Black	Native American	Asian/Pacific Islander	Multi-Racial	F/R Lunch Eligible	Not F/R Lunch Eligible	LEP	Not LEP	IEP	Not IEP
Class of 2009	13.1%	14.9%	11.1%	25.0%	12.7%	12.5%	27.5%	32.2%	6.0%	16.7%	24.0%	10.1%	21.5%	12.9%	22.6%	11.2%
Class of 2010	9.3%	11.5%	7.1%	22.7%	8.9%	8.8%	19.0%	22.2%	6.0%	3.1%	19.4%	6.3%	17.7%	9.2%	20.4%	7.0%
Change 2009-10	-3.7%	-3.4%	-4.1%	-2.3%	-3.8%	-3.7%	-8.5%	-10.0%	-0.1%	NA	-4.7%	-3.8%	-3.8%	-3.8%	-2.2%	-4.2%

4-Year Dropout Rate (GEDs counted as Dropouts)																
	All Students	Male	Female	Hispanic	Non-Hispanic	White	Black	Native American	Asian/Pacific Islander	Multi-Racial	F/R Lunch Eligible	Not F/R Lunch Eligible	LEP	Not LEP	IEP	Not IEP
Class of 2009	11.9%	13.7%	9.9%	21.3%	11.6%	11.4%	22.0%	32.2%	5.7%	11.1%	19.9%	9.7%	19.1%	11.8%	16.0%	11.1%
Class of 2010	6.3%	7.5%	5.0%	11.1%	6.1%	6.1%	9.1%	17.8%	3.9%	1.5%	12.3%	4.4%	9.8%	6.2%	10.5%	5.4%
Class of 2011	5.6%	6.7%	4.4%	10.5%	5.4%	5.4%	10.8%	5.6%	2.9%	1.4%	11.2%	3.6%	7.3%	5.5%	9.8%	4.7%
Change 2009-10	-5.6%	-6.2%	-4.9%	-10.2%	-5.5%	-5.3%	-12.8%	-14.4%	-1.8%	-9.6%	-7.6%	-5.2%	-9.3%	-5.6%	-5.5%	-5.7%
Change 2010-11	-0.7%	-0.8%	-0.6%	-0.6%	-0.7%	-0.7%	1.6%	-12.2%	-0.9%	-0.2%	-1.1%	-0.8%	-2.5%	-0.6%	-0.7%	-0.7%

4-Year Dropout Rate (GEDs counted as Graduates)																
	All Students	Male	Female	Hispanic	Non-Hispanic	White	Black	Native American	Asian/Pacific Islander	Multi-Racial	F/R Lunch Eligible	Not F/R Lunch Eligible	LEP	Not LEP	IEP	Not IEP
Class of 2009	9.3%	10.7%	7.8%	18.3%	9.0%	8.8%	19.7%	28.8%	4.0%	5.6%	16.2%	7.4%	17.4%	9.2%	13.5%	8.5%
Class of 2010	4.4%	5.2%	3.6%	9.9%	4.3%	4.2%	7.9%	15.6%	3.2%	0.0%	9.0%	3.1%	9.5%	4.3%	8.2%	3.7%
Class of 2011	3.3%	3.8%	2.7%	7.8%	3.1%	3.1%	9.4%	1.9%	1.8%	0.0%	7.1%	2.0%	6.3%	3.2%	7.1%	2.5%
Change 2009-10	-4.8%	-5.5%	-4.1%	-8.4%	-4.7%	-4.6%	-11.7%	-13.3%	-0.9%	-5.6%	-7.3%	-4.3%	-7.9%	-4.8%	-5.3%	-4.8%
Change 2010-11	-1.1%	-1.4%	-0.9%	-2.1%	-1.1%	-1.2%	1.5%	-13.7%	-1.4%	0.0%	-1.9%	-1.1%	-3.1%	-1.1%	-1.1%	-1.1%

Post-Secondary Enrollment Rate																
	All Students	Male	Female	Hispanic	Non-Hispanic	White	Black	Native American	Asian/Pacific Islander	Multi-Racial	F/R Lunch Eligible	Not F/R Lunch Eligible	LEP	Not LEP	IEP	Not IEP
Class of 2009	63.7%	57.6%	69.8%	49.9%	64.0%	64.1%	55.7%	42.1%	70.5%	57.1%	39.7%	69.1%	42.7%	64.0%	37.7%	68.1%
Class of 2010	68.6%	63.0%	74.1%	60.1%	68.8%	68.8%	66.1%	50.7%	76.7%	60.7%	45.7%	74.3%	51.2%	68.9%	44.2%	72.8%
Change 2009-10	4.9%	5.3%	4.3%	10.2%	4.8%	4.7%	10.5%	8.6%	6.2%	3.5%	6.0%	5.2%	8.5%	4.9%	6.5%	4.7%

2-Year College Post-Secondary Graduation																
	All Students	Male	Female	Hispanic	Non-Hispanic	White	Black	Native American	Asian/Pacific Islander	Multi-Racial	F/R Lunch Eligible	Not F/R Lunch Eligible	LEP	Not LEP	IEP	Not IEP
Class of 2009	NA	NA	NA	NA	NA	NA	NA	NA	NA	NA	NA	NA	NA	NA	NA	NA

*Post-Secondary Graduation data not yet available in New Hampshire.



Rhode Island

4-Year Graduation Rate																
	All Students	Male	Female	Hispanic	Non-Hispanic	White	Black	Native American	Asian/Pacific Islander	Multi-Racial	F/R Lunch Eligible	Not F/R Lunch Eligible	LEP	Not LEP	IEP	Not IEP
Class of 2009	75.5%	71.1%	80.0%	64.0%	79.2%	79.6%	66.7%	70.7%	73.3%	NA	63.4%	84.7%	63.3%	76.2%	58.7%	79.8%
Class of 2010	75.9%	72.3%	79.7%	66.4%	78.0%	79.5%	67.2%	61.3%	81.0%	NA	65.0%	85.1%	65.6%	76.5%	57.4%	80.5%
Class of 2011	77.3%	72.1%	82.5%	67.2%	79.7%	81.9%	66.6%	66.2%	75.4%	76.6%	65.7%	89.0%	68.3%	77.9%	58.1%	82.4%
Change 2009-10	0.4%	1.2%	-0.3%	2.4%	-1.3%	-0.1%	0.5%	-9.4%	7.6%	NA	1.7%	0.3%	2.3%	0.3%	-1.3%	0.7%
Change 2010-11	1.3%	-0.1%	2.8%	0.8%	1.7%	2.5%	-0.5%	4.9%	-5.5%	NA	0.6%	3.9%	2.6%	1.3%	0.7%	1.8%

5-Year Graduation Rate																
	All Students	Male	Female	Hispanic	Non-Hispanic	White	Black	Native American	Asian/Pacific Islander	Multi-Racial	F/R Lunch Eligible	Not F/R Lunch Eligible	LEP	Not LEP	IEP	Not IEP
Class of 2009	78.2%	74.8%	81.7%	67.4%	81.9%	81.8%	71.9%	76.8%	76.0%	NA	67.5%	86.4%	67.6%	78.9%	64.1%	81.9%
Class of 2010	79.5%	76.5%	82.5%	71.3%	81.2%	82.4%	72.6%	66.7%	83.5%	NA	70.1%	87.3%	72.5%	79.9%	64.0%	83.3%
Change 2009-10	1.3%	1.7%	0.8%	3.9%	-0.6%	0.6%	0.7%	-10.2%	7.5%	NA	2.6%	0.9%	4.9%	1.0%	-0.1%	1.4%

6-Year Graduation Rate																
	All Students	Male	Female	Hispanic	Non-Hispanic	White	Black	Native American	Asian/Pacific Islander	Multi-Racial	F/R Lunch Eligible	Not F/R Lunch Eligible	LEP	Not LEP	IEP	Not IEP
Class of 2009	78.7%	75.4%	82.2%	68.1%	82.3%	82.3%	72.7%	76.8%	76.3%	NA	68.4%	86.7%	68.6%	79.4%	65.8%	82.1%

Dropout Rate (GEDs counted as Dropouts, 5-Year Rate)																
	All Students	Male	Female	Hispanic	Non-Hispanic	White	Black	Native American	Asian/Pacific Islander	Multi-Racial	F/R Lunch Eligible	Not F/R Lunch Eligible	LEP	Not LEP	IEP	Not IEP
Class of 2009	21.8%	25.2%	18.3%	32.6%	18.1%	18.2%	28.1%	23.2%	24.0%	NA	32.5%	13.6%	32.4%	21.1%	35.9%	18.1%
Class of 2010	20.5%	23.5%	17.5%	28.7%	18.8%	17.6%	27.4%	33.3%	16.5%	NA	29.9%	12.7%	27.5%	20.1%	36.0%	16.7%
Change 2009-10	-1.3%	-1.7%	-0.8%	-3.9%	0.6%	-0.6%	-0.7%	10.2%	-7.5%	NA	-2.6%	-0.9%	-4.9%	-1.0%	0.1%	-1.4%

Rhode Island Continued

Dropout Rate (GEDs counted as Graduates, 5-Year Rate)																
	All Students	Male	Female	Hispanic	Non-Hispanic	White	Black	Native American	Asian/Pacific Islander	Multi-Racial	F/R Lunch Eligible	Not F/R Lunch Eligible	LEP	Not LEP	IEP	Not IEP
Class of 2009	16.8%	19.6%	13.9%	27.8%	13.1%	13.2%	22.3%	19.5%	20.5%	NA	26.0%	9.8%	30.1%	16.0%	30.3%	13.4%
Class of 2010	17.0%	19.6%	14.4%	25.5%	15.2%	14.0%	23.8%	30.1%	13.5%	NA	25.1%	10.2%	26.5%	16.5%	32.2%	13.3%
Change 2009-10	0.2%	0.0%	0.5%	-2.3%	2.2%	0.8%	1.4%	10.6%	-7.0%	NA	-0.8%	0.4%	-3.6%	0.5%	2.0%	-0.1%

4-Year Dropout Rate (GEDs counted as Dropouts)																
	All Students	Male	Female	Hispanic	Non-Hispanic	White	Black	Native American	Asian/Pacific Islander	Multi-Racial	F/R Lunch Eligible	Not F/R Lunch Eligible	LEP	Not LEP	IEP	Not IEP
Class of 2009	18.8%	21.5%	16.0%	27.7%	15.5%	15.9%	23.9%	15.9%	20.8%	NA	27.6%	12.1%	27.1%	18.3%	28.5%	16.3%
Class of 2010	17.4%	19.5%	15.3%	25.4%	15.7%	14.6%	23.1%	21.5%	15.3%	NA	25.5%	10.6%	24.9%	17.0%	27.0%	15.0%
Class of 2011	15.5%	18.5%	12.4%	22.7%	13.7%	12.3%	21.1%	25.4%	16.9%	NA	24.0%	6.9%	21.0%	15.1%	24.9%	13.0%
Change 2009-10	-1.4%	-2.1%	-0.8%	-2.3%	0.1%	-1.3%	-0.8%	5.7%	-5.5%	NA	-2.1%	-1.5%	-2.2%	-1.3%	-1.4%	-1.3%
Change 2010-11	-1.9%	-0.9%	-2.9%	-2.7%	-1.9%	-2.3%	-1.9%	3.8%	1.7%	NA	-1.5%	-3.7%	-3.8%	-1.8%	-2.2%	-2.0%

4-Year Drop Out Rate (GEDs counted as Graduates)																
	All Students	Male	Female	Hispanic	Non-Hispanic	White	Black	Native American	Asian/Pacific Islander	Multi-Racial	F/R Lunch Eligible	Not F/R Lunch Eligible	LEP	Not LEP	IEP	Not IEP
Class of 2009	13.9%	15.9%	11.7%	22.9%	10.4%	10.9%	18.2%	12.2%	17.3%	NA	21.0%	8.4%	24.8%	13.2%	22.8%	11.6%
Class of 2010	13.9%	15.6%	12.2%	22.2%	12.1%	11.0%	19.5%	18.3%	12.3%	NA	20.7%	8.2%	23.8%	13.3%	23.2%	11.6%
Class of 2011	12.5%	15.0%	9.9%	19.7%	10.7%	9.5%	17.2%	21.1%	13.6%	16.2%	19.5%	5.4%	20.1%	12.0%	22.1%	9.9%
Change 2009-10	0.0%	-0.4%	0.4%	-0.7%	1.7%	0.1%	1.3%	6.1%	-5.1%	NA	-0.3%	-0.2%	-1.0%	0.1%	0.4%	0.0%
Change 2010-11	-1.4%	-0.6%	-2.3%	-2.6%	-1.4%	-1.6%	-2.3%	2.8%	1.3%	NA	-1.2%	-2.8%	-3.7%	-1.4%	-1.1%	-1.7%

Post-Secondary Enrollment Rate																
	All Students	Male	Female	Hispanic	Non-Hispanic	White	Black	Native American	Asian/Pacific Islander	Multi-Racial	F/R Lunch Eligible	Not F/R Lunch Eligible	LEP	Not LEP	IEP	Not IEP
Class of 2009	69.5%	67.5%	71.3%	58.8%	71.4%	72.4%	64.1%	65.1%	68.5%	NA	57.9%	76.5%	47.2%	70.7%	52.6%	73.0%
Class of 2010	72.4%	68.9%	75.8%	61.6%	74.5%	75.4%	67.8%	58.1%	76.3%	NA	61.6%	79.8%	55.4%	73.3%	50.6%	76.6%
Change 2009-10	3.0%	1.4%	4.5%	2.8%	3.1%	3.0%	3.7%	-7.0%	7.7%	NA	3.7%	3.3%	8.2%	2.7%	-2.0%	3.6%

2-Year College Post-Secondary Graduation																
	All Students	Male	Female	Hispanic	Non-Hispanic	White	Black	Native American	Asian/Pacific Islander	Multi-Racial	F/R Lunch Eligible	Not F/R Lunch Eligible	LEP	Not LEP	IEP	Not IEP
Class of 2009	28	12	16	**	**	24	**	**	**	**	**	**	**	**	**	**

Vermont

4-Year Graduation Rate																
	All Students	Male	Female	Hispanic	Non-Hispanic	White	Black	Native American	Asian/Pacific Islander	Multi-Racial	F/R Lunch Eligible	Not F/R Lunch Eligible	LEP	Not LEP	IEP	Not IEP
Class of 2009	85.5%	83.3%	87.9%	76.8%	85.6%	85.8%	75.5%	73.8%	88.4%	-	73.0%	92.5%	80.9%	85.6%	64.1%	89.7%
Class of 2010	87.1%	85.1%	89.3%	78.5%	87.3%	87.4%	74.2%	75.3%	85.4%	-	76.7%	93.4%	75.5%	87.4%	70.0%	90.4%
Class of 2011	87.5%	85.8%	89.2%	85.1%	87.5%	87.5%	83.0%	77.2%	89.8%	-	76.6%	94.3%	82.1%	87.6%	68.9%	91.0%
Change 2009-10	1.6%	1.8%	1.4%	1.7%	1.6%	1.6%	-1.3%	1.5%	-3.0%	-	3.6%	0.9%	-5.4%	1.8%	5.9%	0.7%
Change 2010-11	0.3%	0.7%	-0.1%	6.6%	0.2%	0.0%	8.8%	1.9%	4.4%	-	0.0%	0.9%	6.6%	0.2%	-1.1%	0.6%

5-Year Graduation Rate																
	All Students	Male	Female	Hispanic	Non-Hispanic	White	Black	Native American	Asian/Pacific Islander	Multi-Racial	F/R Lunch Eligible	Not F/R Lunch Eligible	LEP	Not LEP	IEP	Not IEP
Class of 2009	88.9%	87.5%	90.5%	79.8%	89.1%	89.1%	84.9%	76.5%	91.6%	-	79.0%	94.4%	89.6%	88.9%	72.8%	92.0%
Class of 2010	89.8%	88.5%	91.2%	83.7%	89.9%	89.9%	81.5%	80.0%	91.3%	-	81.3%	94.9%	84.6%	89.9%	76.3%	92.3%
Change 2009-10	0.8%	1.0%	0.7%	3.9%	0.8%	0.8%	-3.4%	3.5%	-0.3%	-	2.3%	0.4%	-5.0%	1.0%	3.4%	0.3%

*Unique calculation in VT because base data comparable to other states not provided.

6-Year Graduation Rate																
	All Students	Male	Female	Hispanic	Non-Hispanic	White	Black	Native American	Asian/Pacific Islander	Multi-Racial	F/R Lunch Eligible	Not F/R Lunch Eligible	LEP	Not LEP	IEP	Not IEP
Class of 2009	89.1%	87.7%	90.7%	75.8%	89.3%	89.3%	84.5%	77.4%	89.8%	-	79.5%	94.5%	88.2%	89.2%	74.6%	92.0%

*Unique calculation in VT because base data comparable to other states not provided.

Dropout Rate (GEDs counted as Dropouts, 5-Year Rate*)																
	All Students	Male	Female	Hispanic	Non-Hispanic	White	Black	Native American	Asian/Pacific Islander	Multi-Racial	F/R Lunch Eligible	Not F/R Lunch Eligible	LEP	Not LEP	IEP	Not IEP
Class of 2009	11.5%	13.0%	9.8%	25.3%	11.3%	11.4%	16.8%	22.6%	10.9%	-	21.7%	5.7%	11.8%	11.5%	28.1%	8.2%
Class of 2010	10.1%	11.5%	8.5%	17.2%	10.0%	9.9%	19.0%	20.0%	8.0%	-	18.2%	5.2%	14.3%	10.0%	23.9%	7.4%
Change 2009-10	-1.4%	-1.5%	-1.3%	-8.1%	-1.3%	-1.4%	2.2%	-2.6%	-2.9%	-	-3.5%	-0.5%	2.5%	-1.5%	-4.1%	-0.8%

Vermont Continued

Dropout Rate (GEDs counted as Graduates, 5-Year Rate*)																
	All Students	Male	Female	Hispanic	Non-Hispanic	White	Black	Native American	Asian/Pacific Islander	Multi-Racial	F/R Lunch Eligible	Not F/R Lunch Eligible	LEP	Not LEP	IEP	Not IEP
Class of 2009	9.0%	10.0%	8.0%	22.5%	8.9%	9.0%	13.2%	20.0%	10.5%	–	17.4%	4.4%	10.4%	9.0%	26.7%	5.7%
Class of 2010	8.3%	9.7%	6.7%	12.0%	8.2%	8.1%	17.3%	16.5%	7.2%	–	15.5%	3.9%	10.7%	8.2%	22.4%	5.6%
Change 2009-10	-0.8%	-0.3%	-1.3%	-10.5%	-0.7%	-0.9%	4.1%	-3.5%	-3.2%	–	-2.0%	-0.5%	0.3%	-0.8%	-4.3%	-0.1%

*Unique calculation in VT because base data comparable to other states not provided.

*Unable to calculate 4-Year Dropout Rate in VT because # of students enrolled in a 5th year not provided.

Post-Secondary Enrollment Rate																
	All Students	Male	Female	Hispanic	Non-Hispanic	White	Black	Native American	Asian/Pacific Islander	Multi-Racial	F/R Lunch Eligible	Not F/R Lunch Eligible	LEP	Not LEP	IEP	Not IEP
Class of 2009	60.4%	54.2%	66.7%	60.6%	60.4%	60.5%	58.9%	52.3%	59.5%	–	43.5%	68.2%	54.2%	60.5%	24.6%	65.8%
Class of 2010	60.1%	53.5%	66.8%	58.4%	60.2%	60.3%	51.5%	36.8%	74.6%	–	43.2%	68.8%	56.3%	60.2%	26.3%	65.4%
Change 2009-10	-0.3%	-0.7%	0.1%	-2.1%	-0.2%	-0.2%	-7.4%	-15.5%	15.1%	–	-0.3%	0.6%	2.2%	-0.3%	1.7%	-0.4%

2-Year College Post-Secondary Graduation																
	All Students	Male	Female	Hispanic	Non-Hispanic	White	Black	Native American	Asian/Pacific Islander	Multi-Racial	F/R Lunch Eligible	Not F/R Lunch Eligible	LEP	Not LEP	IEP	Not IEP
Class of 2009	67	29	38	**	**	67	**	**	**	–	21	46	**	**	**	**

Appendix A: Members of the Data Strategic Action Team

2011-2012 Members of the Data Strategic Action Team⁴

Great Schools Partnership	
David Ruff, Executive Director	
Duke Albanese, Senior Policy Advisor	
Nellie Mae Education Foundation	
Charlie Toulmin, Director of Policy	Eve Goldberg, Research & Policy Associate
Beth Miller, Director of Research and Evaluation	
UMass Donahue Institute	
Lonnie Kaufman, Senior Research Manager	
Carrie Bernstein, Research Analyst	
Consultants	
John P. Beaudoin, CEO Research in Action, Inc.	Terry-Ann Bourgeois, Research in Action, Inc.
Michael Grady, Deputy Director, Annenberg Institute for School Reform	
Connecticut Representatives	
Karen Adesso	Jan Kiehne
Charles Martie	Malia Sieve
Maine Representatives	
Bill Hurwitch	David Silvernail
Brian Snow	Amy Johnson
New Hampshire Representatives	
Sallie Fellows	Heidi Hedegard
Irene Koffink	Amy Slattery
Sudha Sharma	Charles Annal
Michael Schwartz	
Rhode Island Representatives	
Margaret Votta	Janet Durfee -Hidalgo
Marcia Cross	Anne Seitsinger
Ken Gu	Jason Becker
Vermont Representatives	
Glenn Bailey	David Buchdahl
Stephen Magill	Tom Alderman
Stacey Murdock	Daniel Shepard

⁴ This list was drawn from the list of data and information representatives dated October 2011 and circulated at the October 25th NESSC Data Strategic Action Team meeting.

Appendix B: Data Submitted by the States

Connecticut

# First Time Freshmen																
	All Student s	Male	Female	Hispanic	Non-Hispanic	White	Black	Native American	Asian/Pacific Islander	Multi-Racial	F/R Lunch Eligible	Not F/R Lunch Eligible	LEP	Not LEP	IEP	Not IEP
<i>Class of 2009</i>	44,307	22,658	21,649	6,682	37,625	30,002	6,101	115	1,407	-	11,417	32,890	1,750	42,557	5,474	38,833
<i>Class of 2010</i>	45,263	23,183	22,080	7,130	38,133	30,156	6,361	155	1,461	-	11,645	33,618	1,759	43,504	5,384	39,879
<i>Class of 2011</i>	45,451	23,297	22,154	7,381	38,070	29,867	6,575	156	1,472	-	11,398	34,053	1,865	43,586	5,439	40,012
# Students Transferred In or Out (+/-)																
	All Student s	Male	Female	Hispanic	Non-Hispanic	White	Black	Native American	Asian/Pacific Islander	Multi-Racial	F/R Lunch Eligible	Not F/R Lunch Eligible	LEP	Not LEP	IEP	Not IEP
<i>Class of 2009</i>	-659	-253	-406	**	**	-849	73	**	119	-	-343	-316	372	-1,031	-403	-256
<i>Class of 2010</i>	-649	-260	-389	-161	-488	-706	121	**	107	-	-206	-443	214	-863	-241	-408
<i>Class of 2011</i>	-113	-11	-102	**	**	-116	86	**	43	-	587	-700	79	-192	-198	85
# Graduating On Time <= 4 Years																
	All Student s	Male	Female	Hispanic	Non-Hispanic	White	Black	Native American	Asian/Pacific Islander	Multi-Racial	F/R Lunch Eligible	Not F/R Lunch Eligible	LEP	Not LEP	IEP	Not IEP
<i>Class of 2009</i>	34,626	16,998	17,628	3,880	30,746	25,324	4,086	79	1,257	-	6,635	27,991	1,133	33,493	3,110	31,516
<i>Class of 2010</i>	36,407	17,948	18,459	4,431	31,976	26,062	4,421	105	1,388	-	7,134	29,273	1,163	35,244	3,182	33,225
<i>Class of 2011</i>	37,403	18,469	18,934	4,625	32,778	26,555	4,718	108	1,397	-	7,607	29,796	1,190	36,213	3,273	34,130
# Cohort Students Enrolled in a 5th Year																
	All Student s	Male	Female	Hispanic	Non-Hispanic	White	Black	Native American	Asian/Pacific Islander	Multi-Racial	F/R Lunch Eligible	Not F/R Lunch Eligible	LEP	Not LEP	IEP	Not IEP
<i>Class of 2009</i>	2,890	1,862	1,028	627	2,263	1,560	631	**	64	-	1,220	1,670	158	2,732	992	1,898
<i>Class of 2010</i>	2,710	1,815	895	792	1,918	1,172	683	**	53	-	1,369	1,341	217	2,493	1,097	1,613
<i>Class of 2011</i>	2,898	1,990	908	782	2,116	1,298	757	**	51	-	1,542	1,356	235	2,663	1,145	1,753

Connecticut Continued

# Cohort Students Graduating in 5 Years																
	All Students	Male	Female	Hispanic	Non-Hispanic	White	Black	Native American	Asian/Pacific Islander	Multi-Racial	F/R Lunch Eligible	Not F/R Lunch Eligible	LEP	Not LEP	IEP	Not IEP
<i>Class of 2009</i>	2,012	1,149	863	400	1,612	1,206	356	**	45	-	797	1,215	101	1,911	515	1,497
<i>Class of 2010</i>	1,175	777	398	340	835	525	282	**	22	-	550	625	102	1,073	333	842
# Cohort Students Graduating in 6 Years																
	All Students	Male	Female	Hispanic	Non-Hispanic	White	Black	Native American	Asian/Pacific Islander	Multi-Racial	F/R Lunch Eligible	Not F/R Lunch Eligible	LEP	Not LEP	IEP	Not IEP
<i>Class of 2009</i>	332	226	106	84	248	162	75	**	**	-	163	169	23	309	198	134
# Cohort Students Obtaining GEDs																
	All Students	Male	Female	Hispanic	Non-Hispanic	White	Black	Native American	Asian/Pacific Islander	Multi-Racial	F/R Lunch Eligible	Not F/R Lunch Eligible	LEP	Not LEP	IEP	Not IEP
<i>Class of 2009</i>	157	80	77	29	128	80	48	**	**	-	91	66	**	**	18	139
<i>Class of 2010</i>	184	96	88	36	148	97	49	**	**	-	99	85	**	**	24	160
<i>Class of 2011</i>	178	101	77	36	142	112	22	**	**	-	109	69	**	**	17	161
# Alternative Certification/Completion																
	All Students	Male	Female	Hispanic	Non-Hispanic	White	Black	Native American	Asian/Pacific Islander	Multi-Racial	F/R Lunch Eligible	Not F/R Lunch Eligible	LEP	Not LEP	IEP	Not IEP
<i>Class of 2009</i>	128	116	12	36	92	37	55	**	**	-	100	28	**	**	27	101
<i>Class of 2010</i>	181	167	14	36	145	69	75	**	**	-	152	29	**	**	40	141
<i>Class of 2011</i>	58	**	**	19	39	20	19	**	**	-	53	**	**	**	14	44
# of Drop Outs as Reported by the State																
	All Students	Male	Female	Hispanic	Non-Hispanic	White	Black	Native American	Asian/Pacific Islander	Multi-Racial	F/R Lunch Eligible	Not F/R Lunch Eligible	LEP	Not LEP	IEP	Not IEP
<i>Class of 2009</i>	6,004	3,429	2,575	2,145	3,859	2,232	1,402	20	205	-	3,119	2,885	830	5,174	942	5,062
<i>Class of 2010</i>	5,349	3,003	2,346	1,722	3,627	2,156	1,315	30	126	-	2,807	2,542	595	4,754	824	4,525
<i>Class of 2011</i>	4,922	2,743	2,179	1,818	3,104	1,847	1,157	68	32	-	1,888	3,034	578	4,344	880	4,042

Connecticut Continued

Early Enrollment in Post-Secondary																
	All Students	Male	Female	Hispanic	Non-Hispanic	White	Black	Native American	Asian/Pacific Islander	Multi-Racial	F/R Lunch Eligible	Not F/R Lunch Eligible	LEP	Not LEP	IEP	Not IEP
<i>Class of 2009</i>	819	358	461	178	641	355	225	**	56	-	342	477	24	795	49	770
<i>Class of 2010</i>	628	307	321	150	478	228	183	**	62	-	277	351	18	610	24	604
<i>Class of 2011</i>	800	374	426	191	609	272	258	**	70	**	396	404	22	778	40	760
# Enrolled in 2 Year Program/College Immediately																
	All Students	Male	Female	Hispanic	Non-Hispanic	White	Black	Native American	Asian/Pacific Islander	Multi-Racial	F/R Lunch Eligible	Not F/R Lunch Eligible	LEP	Not LEP	IEP	Not IEP
<i>Class of 2009</i>	6,495	3,225	3,270	1,011	5,484	4,257	1,019	19	189	-	1,737	4,758	222	6,273	726	5,769
<i>Class of 2010</i>	6,655	3,308	3,347	1,182	5,473	4,234	996	31	212	-	1,927	4,728	198	6,457	779	5,876
<i>Class of 2011</i>	6,468	3,120	3,348	1,186	5,282	3,895	1,109	35	200	43	2,358	4,110	197	6,271	691	5,777
# Enrolled in 4 Year Program/College Immediately																
	All Students	Male	Female	Hispanic	Non-Hispanic	White	Black	Native American	Asian/Pacific Islander	Multi-Racial	F/R Lunch Eligible	Not F/R Lunch Eligible	LEP	Not LEP	IEP	Not IEP
<i>Class of 2009</i>	18,311	8,206	10,105	1,281	17,030	15,421	1,281	27	750	-	1,497	16,814	41	18,270	488	18,311
<i>Class of 2010</i>	20,059	9,103	10,956	1,071	18,988	16,565	1,377	42	1,004	-	1,915	18,144	62	19,997	641	19,418
<i>Class of 2011</i>	20,200	9,060	11,140	1,384	18,816	16,056	1,651	65	906	138	2,599	17,601	63	20,137	449	19,751
# Enrolled in 2 Year Program/College at a later date																
	All Students	Male	Female	Hispanic	Non-Hispanic	White	Black	Native American	Asian/Pacific Islander	Multi-Racial	F/R Lunch Eligible	Not F/R Lunch Eligible	LEP	Not LEP	IEP	Not IEP
<i>Class of 2009</i>	1,763	930	833	384	1,379	959	366	**	47	-	664	1,099	77	1,686	201	1,562
<i>Class of 2010</i>	1,136	566	570	256	880	554	288	**	34	-	485	651	40	1,096	135	1,001
# Enrolled in 4 Year Program/College at a later date																
	All Students	Male	Female	Hispanic	Non-Hispanic	White	Black	Native American	Asian/Pacific Islander	Multi-Racial	F/R Lunch Eligible	Not F/R Lunch Eligible	LEP	Not LEP	IEP	Not IEP
<i>Class of 2009</i>	828	462	366	62	766	615	122	**	27	-	159	669	**	**	50	778
<i>Class of 2010</i>	451	232	219	39	412	327	64	**	20	-	103	348	**	**	22	429

Connecticut Continued

# Students Completing 2-Year Program/College																
	All Students	Male	Female	Hispanic	Non-Hispanic	White	Black	Native American	Asian/Pacific Islander	Multi-Racial	F/R Lunch Eligible	Not F/R Lunch Eligible	LEP	Not LEP	IEP	Not IEP
<i>Class of 2009</i>	392	179	213	42	350	297	37	**	15	-	79	313	**	**	28	364
<i>Class of 2010</i>	NA	NA	NA	NA	NA	NA	NA	NA	NA	-	NA	NA	NA	NA	NA	NA
# Students Completing 4-Year College																
	All Students	Male	Female	Hispanic	Non-Hispanic	White	Black	Native American	Asian/Pacific Islander	Multi-Racial	F/R Lunch Eligible	Not F/R Lunch Eligible	LEP	Not LEP	IEP	Not IEP
<i>Class of 2009</i>	NA	NA	NA	NA	NA	NA	NA	NA	NA	-	NA	NA	NA	NA	NA	NA
<i>Class of 2010</i>	NA	NA	NA	NA	NA	NA	NA	NA	NA	-	NA	NA	NA	NA	NA	NA
Early Enrollment in Post-Secondary ON TIME GRADUATES ONLY																
	All Students	Male	Female	Hispanic	Non-Hispanic	White	Black	Native American	Asian/Pacific Islander	Multi-Racial	F/R Lunch Eligible	Not F/R Lunch Eligible	LEP	Not LEP	IEP	Not IEP
<i>Class of 2009</i>	819	358	461	178	641	355	225	**	56	-	342	477	24	795	49	770
<i>Class of 2010</i>	628	307	321	150	478	228	183	**	62	-	277	351	18	610	24	604
<i>Class of 2011</i>	800	374	426	191	609	272	258	**	70	NA	396	404	22	778	40	760
Enrollment at any time in Post-Secondary GED COMPLETERS ONLY																
	All Students	Male	Female	Hispanic	Non-Hispanic	White	Black	Native American	Asian/Pacific Islander	Multi-Racial	F/R Lunch Eligible	Not F/R Lunch Eligible	LEP	Not LEP	IEP	Not IEP
<i>Class of 2009</i>	52	35	17	14	38	30	**	**	**	-	20	32	**	**	**	**
<i>Class of 2010</i>	44	20	24	**	**	22	13	**	**	-	21	23	**	**	**	**
<i>Class of 2011</i>	79	48	31	24	55	40	**	**	**	NA	26	53	**	**	**	**
Enrollment at any time in Post-Secondary IDENTIFIED "DROP OUTS" ONLY																
	All Students	Male	Female	Hispanic	Non-Hispanic	White	Black	Native American	Asian/Pacific Islander	Multi-Racial	F/R Lunch Eligible	Not F/R Lunch Eligible	LEP	Not LEP	IEP	Not IEP
<i>Class of 2009</i>	733	364	369	160	573	362	161	**	46	-	260	473	39	694	57	676
<i>Class of 2010</i>	708	321	387	122	586	373	166	16	31	-	224	484	42	666	46	662
<i>Class of 2011</i>	893	414	479	314	579	366	203	**	**	NA	455	438	66	827	85	808

Maine

# First Time Freshmen																
	All Students	Male	Female	Hispanic	Non-Hispanic	White	Black	Native American	Asian/Pacific Islander	Multi-Racial	F/R Lunch Eligible	Not F/R Lunch Eligible	LEP	Not LEP	IEP	Not IEP
<i>Class of 2009</i>	16,835	8,570	8,265	157	16,678	16,029	301	130	218	-	5,053	11,782	193	16,642	2,432	14,403
<i>Class of 2010</i>	17,068	8,888	8,180	180	16,888	16,092	403	138	255	-	5,620	11,448	365	16,703	2,561	14,507
<i>Class of 2011</i>	16,181	8,311	7,870	183	15,998	15,364	281	100	164	89	7,237	8,944	299	15,882	2,952	13,229
# Students Transferred In or Out (+/-)																
	All Students	Male	Female	Hispanic	Non-Hispanic	White	Black	Native American	Asian/Pacific Islander	Multi-Racial	F/R Lunch Eligible	Not F/R Lunch Eligible	LEP	Not LEP	IEP	Not IEP
<i>Class of 2009</i>	66	53	13	**	**	**	39	**	33	-	49	17	**	**	**	**
<i>Class of 2010</i>	-533	-275	-258	**	**	-529	-24	**	26	-	-218	-315	**	**	-102	-431
<i>Class of 2011</i>	-397	-165	-232	22	-419	-536	52	18	41	**	-191	-206	31	-428	-139	-258
# Graduating On Time <= 4 Years																
	All Students	Male	Female	Hispanic	Non-Hispanic	White	Black	Native American	Asian/Pacific Islander	Multi-Racial	F/R Lunch Eligible	Not F/R Lunch Eligible	LEP	Not LEP	IEP	Not IEP
<i>Class of 2009</i>	13,588	6,706	6,882	109	13,479	12,942	242	85	210	-	3,479	10,109	195	13,393	1,615	11,973
<i>Class of 2010</i>	13,692	6,929	6,763	135	13,557	12,942	275	92	248	-	3,836	9,856	288	13,404	1,600	12,092
<i>Class of 2011</i>	13,156	6,576	6,580	175	12,981	12,372	249	95	185	80	5,067	8,089	251	12,905	1,829	11,327
# Cohort Students Enrolled in a 5th Year																
	All Students	Male	Female	Hispanic	Non-Hispanic	White	Black	Native American	Asian/Pacific Islander	Multi-Racial	F/R Lunch Eligible	Not F/R Lunch Eligible	LEP	Not LEP	IEP	Not IEP
<i>Class of 2009</i>	774	499	275	12	762	716	NA	**	**	-	429	345	18	756	289	485
<i>Class of 2010</i>	1,036	693	343	17	1,019	937	59	**	14	-	564	472	40	996	411	625
<i>Class of 2011</i>	883	553	330	21	862	777	51	11	15	**	667	216	43	840	444	439

Maine Continued

# Cohort Students Graduating in 5 Years																
	All Students	Male	Female	Hispanic	Non-Hispanic	White	Black	Native American	Asian/Pacific Islander	Multi-Racial	F/R Lunch Eligible	Not F/R Lunch Eligible	LEP	Not LEP	IEP	Not IEP
<i>Class of 2009</i>	369	243	126	**	**	344	13	**	**	-	360	**	**	369	133	236
<i>Class of 2010</i>	432	289	143	**	**	388	23	**	**	-	419	**	**	431	178	254
# Cohort Students Graduating in 6 Years																
	All Students	Male	Female	Hispanic	Non-Hispanic	White	Black	Native American	Asian/Pacific Islander	Multi-Racial	F/R Lunch Eligible	Not F/R Lunch Eligible	LEP	Not LEP	IEP	Not IEP
<i>Class of 2009</i>	44	30	14	**	**	36	**	**	**	-	**	**	**	**	22	22
# Cohort Students Obtaining GEDs																
	All Students	Male	Female	Hispanic	Non-Hispanic	White	Black	Native American	Asian/Pacific Islander	Multi-Racial	F/R Lunch Eligible	Not F/R Lunch Eligible	LEP	Not LEP	IEP	Not IEP
<i>Class of 2009</i>	NA	NA	NA	NA	NA	NA	NA	NA	NA	-	NA	NA	NA	NA	NA	NA
<i>Class of 2010</i>	NA	NA	NA	NA	NA	NA	NA	NA	NA	-	NA	NA	NA	NA	NA	NA
<i>Class of 2011</i>	NA	NA	NA	NA	NA	NA	NA	NA	NA	NA	NA	NA	NA	NA	NA	NA
# Alternative Certification/Completion																
	All Students	Male	Female	Hispanic	Non-Hispanic	White	Black	Native American	Asian/Pacific Islander	Multi-Racial	F/R Lunch Eligible	Not F/R Lunch Eligible	LEP	Not LEP	IEP	Not IEP
<i>Class of 2009</i>	NA	NA	NA	NA	NA	NA	NA	NA	NA	-	NA	NA	NA	NA	NA	NA
<i>Class of 2010</i>	NA	NA	NA	NA	NA	NA	NA	NA	NA	-	NA	NA	NA	NA	NA	NA
<i>Class of 2011</i>	NA	NA	NA	NA	NA	NA	NA	NA	NA	NA	NA	NA	NA	NA	NA	NA
# of Drop Outs as Reported by the State																
	All Students	Male	Female	Hispanic	Non-Hispanic	White	Black	Native American	Asian/Pacific Islander	Multi-Racial	F/R Lunch Eligible	Not F/R Lunch Eligible	LEP	Not LEP	IEP	Not IEP
<i>Class of 2009</i>	3,225	1,822	1,403	40	3,185	2,985	94	61	45	NA	1,505	1,720	57	3,168	765	2,460
<i>Class of 2010</i>	2,978	1,676	1,302	47	2,931	2,754	86	52	39	NA	1,540	1,438	38	2,940	702	2,276
<i>Class of 2011</i>	1,889	1,139	750	24	1,865	1,751	65	26	17	**	1,183	706	22	1,867	516	1,373

Maine Continued

Early Enrollment in Post-Secondary																
	All Students	Male	Female	Hispanic	Non-Hispanic	White	Black	Native American	Asian/Pacific Islander	Multi-Racial	F/R Lunch Eligible	Not F/R Lunch Eligible	LEP	Not LEP	IEP	Not IEP
<i>Class of 2009</i>	NA	NA	NA	NA	NA	NA	NA	NA	NA	-	NA	NA	NA	NA	NA	NA
<i>Class of 2010</i>	NA	NA	NA	NA	NA	NA	NA	NA	NA	-	NA	NA	NA	NA	NA	NA
<i>Class of 2011</i>	NA	NA	NA	NA	NA	NA	NA	NA	NA	NA	NA	NA	NA	NA	NA	NA
# Enrolled in 2 Year Program/College Immediately																
	All Students	Male	Female	Hispanic	Non-Hispanic	White	Black	Native American	Asian/Pacific Islander	Multi-Racial	F/R Lunch Eligible	Not F/R Lunch Eligible	LEP	Not LEP	IEP	Not IEP
<i>Class of 2009</i>	2,042	NA	NA	NA	NA	NA	NA	NA	NA	-	NA	NA	NA	NA	NA	NA
<i>Class of 2010</i>	2,089	NA	NA	NA	NA	NA	NA	NA	NA	-	NA	NA	NA	NA	NA	NA
<i>Class of 2011</i>	1,597	NA	NA	NA	NA	NA	NA	NA	NA	NA	NA	NA	NA	NA	NA	NA
# Enrolled in 4 Year Program/College Immediately																
	All Students	Male	Female	Hispanic	Non-Hispanic	White	Black	Native American	Asian/Pacific Islander	Multi-Racial	F/R Lunch Eligible	Not F/R Lunch Eligible	LEP	Not LEP	IEP	Not IEP
<i>Class of 2009</i>	6,384	NA	NA	NA	NA	NA	NA	NA	NA	-	NA	NA	NA	NA	NA	NA
<i>Class of 2010</i>	6,603	NA	NA	NA	NA	NA	NA	NA	NA	-	NA	NA	NA	NA	NA	NA
<i>Class of 2011</i>	5,268	NA	NA	NA	NA	NA	NA	NA	NA	NA	NA	NA	NA	NA	NA	NA
# Enrolled in 2 Year Program/College at a later date																
	All Students	Male	Female	Hispanic	Non-Hispanic	White	Black	Native American	Asian/Pacific Islander	Multi-Racial	F/R Lunch Eligible	Not F/R Lunch Eligible	LEP	Not LEP	IEP	Not IEP
<i>Class of 2009</i>	200	NA	NA	NA	NA	NA	NA	NA	NA	-	NA	NA	NA	NA	NA	NA
<i>Class of 2010</i>	168	NA	NA	NA	NA	NA	NA	NA	NA	-	NA	NA	NA	NA	NA	NA
# Enrolled in 4 Year Program/College at a later date																
	All Students	Male	Female	Hispanic	Non-Hispanic	White	Black	Native American	Asian/Pacific Islander	Multi-Racial	F/R Lunch Eligible	Not F/R Lunch Eligible	LEP	Not LEP	IEP	Not IEP
<i>Class of 2009</i>	232	NA	NA	NA	NA	NA	NA	NA	NA	-	NA	NA	NA	NA	NA	NA
<i>Class of 2010</i>	207	NA	NA	NA	NA	NA	NA	NA	NA	-	NA	NA	NA	NA	NA	NA

Maine Continued

# Students Completing 2-Year Program/College																
	All Students	Male	Female	Hispanic	Non-Hispanic	White	Black	Native American	Asian/Pacific Islander	Multi-Racial	F/R Lunch Eligible	Not F/R Lunch Eligible	LEP	Not LEP	IEP	Not IEP
<i>Class of 2009</i>	262	NA	NA	NA	NA	NA	NA	NA	NA	-	NA	NA	NA	NA	NA	NA
<i>Class of 2010</i>	NA	NA	NA	NA	NA	NA	NA	NA	NA	-	NA	NA	NA	NA	NA	NA
# Students Completing 4-Year College																
	All Students	Male	Female	Hispanic	Non-Hispanic	White	Black	Native American	Asian/Pacific Islander	Multi-Racial	F/R Lunch Eligible	Not F/R Lunch Eligible	LEP	Not LEP	IEP	Not IEP
<i>Class of 2009</i>	NA	NA	NA	NA	NA	NA	NA	NA	NA	-	NA	NA	NA	NA	NA	NA
<i>Class of 2010</i>	NA	NA	NA	NA	NA	NA	NA	NA	NA	-	NA	NA	NA	NA	NA	NA
Early Enrollment in Post-Secondary ON TIME GRADUATES ONLY																
	All Students	Male	Female	Hispanic	Non-Hispanic	White	Black	Native American	Asian/Pacific Islander	Multi-Racial	F/R Lunch Eligible	Not F/R Lunch Eligible	LEP	Not LEP	IEP	Not IEP
<i>Class of 2009</i>	NA	NA	NA	NA	NA	NA	NA	NA	NA	-	NA	NA	NA	NA	NA	NA
<i>Class of 2010</i>	NA	NA	NA	NA	NA	NA	NA	NA	NA	-	NA	NA	NA	NA	NA	NA
<i>Class of 2011</i>	NA	NA	NA	NA	NA	NA	NA	NA	NA	NA	NA	NA	NA	NA	NA	NA
Enrollment at any time in Post-Secondary GED COMPLETERS ONLY																
	All Students	Male	Female	Hispanic	Non-Hispanic	White	Black	Native American	Asian/Pacific Islander	Multi-Racial	F/R Lunch Eligible	Not F/R Lunch Eligible	LEP	Not LEP	IEP	Not IEP
<i>Class of 2009</i>	NA	NA	NA	NA	NA	NA	NA	NA	NA	-	NA	NA	NA	NA	NA	NA
<i>Class of 2010</i>	NA	NA	NA	NA	NA	NA	NA	NA	NA	-	NA	NA	NA	NA	NA	NA
<i>Class of 2011</i>	NA	NA	NA	NA	NA	NA	NA	NA	NA	NA	NA	NA	NA	NA	NA	NA
Enrollment at any time in Post-Secondary IDENTIFIED "DROP OUTS" ONLY																
	All Students	Male	Female	Hispanic	Non-Hispanic	White	Black	Native American	Asian/Pacific Islander	Multi-Racial	F/R Lunch Eligible	Not F/R Lunch Eligible	LEP	Not LEP	IEP	Not IEP
<i>Class of 2009</i>	NA	NA	NA	NA	NA	NA	NA	NA	NA	-	NA	NA	NA	NA	NA	NA
<i>Class of 2010</i>	NA	NA	NA	NA	NA	NA	NA	NA	NA	-	NA	NA	NA	NA	NA	NA
<i>Class of 2011</i>	NA	NA	NA	NA	NA	NA	NA	NA	NA	NA	NA	NA	NA	NA	NA	NA

New Hampshire

# First Time Freshmen																
	All Students	Male	Female	Hispanic	Non-Hispanic	White	Black	Native American	Asian/Pacific Islander	Multi-Racial	F/R Lunch Eligible	Not F/R Lunch Eligible	LEP	Not LEP	IEP	Not IEP
<i>Class of 2009</i>	18,438	9,483	8,955	544	17,894	17,224	308	53	290	19	3,937	14,501	275	18,163	2,963	15,475
<i>Class of 2010</i>	17,591	8,869	8,722	506	17,085	16,446	253	50	275	61	4,080	13,511	305	17,286	3,005	14,586
<i>Class of 2011</i>	17,087	8,822	8,265	625	16,462	15,688	323	64	313	74	4,335	12,752	305	16,782	2,919	14,168
# Students Transferred In or Out (+/-)																
	All Students	Male	Female	Hispanic	Non-Hispanic	White	Black	Native American	Asian/Pacific Islander	Multi-Racial	F/R Lunch Eligible	Not F/R Lunch Eligible	LEP	Not LEP	IEP	Not IEP
<i>Class of 2009</i>	-428	-168	-260	-19	-409	-420	**	**	**	**	-69	-359	13	-441	27	-455
<i>Class of 2010</i>	-818	-317	-501	-21	-797	-805	**	**	**	**	-170	-648	23	-841	-94	-724
<i>Class of 2011</i>	-1,016	-516	-500	-64	-952	-942	-26	**	26	**	-216	-800	26	-1,042	-148	-868
# Graduating On Time <= 4 Years																
	All Students	Male	Female	Hispanic	Non-Hispanic	White	Black	Native American	Asian/Pacific Islander	Multi-Racial	F/R Lunch Eligible	Not F/R Lunch Eligible	LEP	Not LEP	IEP	Not IEP
<i>Class of 2009</i>	14,595	7,287	7,308	332	14,263	13,759	191	34	267	12	2,542	12,053	192	14,403	2,030	12,565
<i>Class of 2010</i>	14,407	7,075	7,332	340	14,067	13,547	178	33	253	56	2,787	11,620	235	14,172	2,083	12,324
<i>Class of 2011</i>	13,923	6,963	6,960	412	13,511	12,888	220	42	297	64	2,993	10,930	242	13,681	1,971	11,952
# Cohort Students Enrolled in a 5th Year																
	All Students	Male	Female	Hispanic	Non-Hispanic	White	Black	Native American	Asian/Pacific Islander	Multi-Racial	F/R Lunch Eligible	Not F/R Lunch Eligible	LEP	Not LEP	IEP	Not IEP
<i>Class of 2009</i>	1,193	704	489	74	1,119	1,054	45	**	**	**	528	665	38	1,155	451	742
<i>Class of 2010</i>	1,268	815	453	89	1,179	1,105	47	**	16	**	624	644	55	1,213	504	764
<i>Class of 2011</i>	1,215	764	451	88	1,127	1,036	45	**	28	**	649	566	64	1,151	508	707
# Cohort Students Graduating in 5 Years																
	All Students	Male	Female	Hispanic	Non-Hispanic	White	Black	Native American	Asian/Pacific Islander	Multi-Racial	F/R Lunch Eligible	Not F/R Lunch Eligible	LEP	Not LEP	IEP	Not IEP
<i>Class of 2009</i>	512	312	200	39	473	442	21	**	**	**	226	286	26	486	177	335
<i>Class of 2010</i>	14,854	7,349	7,505	367	14,487	13,934	197	34	261	61	3,004	11,850	263	14,591	2,231	12,623

*Note: Class of 2009 data is estimated. Class of 2010 data for "# Cohort Students Graduating in 5 Years" appears to be summative of both the Class of 2009 and Class of 2010 and is treated as such.

New Hampshire Continued

# Cohort Students Graduating in 6 Years																
	All Students	Male	Female	Hispanic	Non-Hispanic	White	Black	Native American	Asian/Pacific Islander	Multi-Racial	F/R Lunch Eligible	Not F/R Lunch Eligible	LEP	Not LEP	IEP	Not IEP
<i>Class of 2009</i>	NA	NA	NA	NA	NA	NA	NA	NA	NA	NA	NA	NA	NA	NA	NA	NA
# Cohort Students Obtaining GEDs																
	All Students	Male	Female	Hispanic	Non-Hispanic	White	Black	Native American	Asian/Pacific Islander	Multi-Racial	F/R Lunch Eligible	Not F/R Lunch Eligible	LEP	Not LEP	IEP	Not IEP
<i>Class of 2009</i>	465	280	185	16	449	434	**	**	**	**	142	323	**	**	74	391
<i>Class of 2010</i>	305	194	111	**	**	292	**	**	**	**	130	175	**	**	66	239
<i>Class of 2011</i>	366	239	127	15	351	340	**	**	**	**	170	196	**	**	75	291
# Alternative Certification/Completion																
	All Students	Male	Female	Hispanic	Non-Hispanic	White	Black	Native American	Asian/Pacific Islander	Multi-Racial	F/R Lunch Eligible	Not F/R Lunch Eligible	LEP	Not LEP	IEP	Not IEP
<i>Class of 2009</i>	84	48	36	**	**	70	**	**	**	**	28	56	**	**	32	52
<i>Class of 2010</i>	48	23	25	**	**	36	**	**	**	**	18	30	**	**	19	29
<i>Class of 2011</i>	36	22	14	**	**	30	**	**	**	**	14	22	**	**	21	15
# of Drop Outs as Reported by the State																
	All Students	Male	Female	Hispanic	Non-Hispanic	White	Black	Native American	Asian/Pacific Islander	Multi-Racial	F/R Lunch Eligible	Not F/R Lunch Eligible	LEP	Not LEP	IEP	Not IEP
<i>Class of 2009</i>	1,673	996	677	96	1,577	1,487	60	17	12	**	628	1,045	50	1,623	403	1,270
<i>Class of 2010</i>	745	445	300	48	697	661	20	**	**	**	351	394	31	714	239	506
<i>Class of 2011</i>	531	318	213	44	487	452	28	**	**	**	293	238	21	510	196	335
Early Enrollment in Post-Secondary																
	All Students	Male	Female	Hispanic	Non-Hispanic	White	Black	Native American	Asian/Pacific Islander	Multi-Racial	F/R Lunch Eligible	Not F/R Lunch Eligible	LEP	Not LEP	IEP	Not IEP
<i>Class of 2009</i>	9,399	4,270	5,129	172	9,227	8,900	116	15	188	**	1,036	8,363	88	9,311	790	8,609
<i>Class of 2010</i>	9,407	4,222	5,185	180	9,227	8,888	108	15	184	32	1,168	8,239	102	9,305	848	8,559
<i>Class of 2011</i>	8,501	3,880	4,621	178	8,323	7,942	120	21	199	41	1,191	7,310	102	8,399	734	7,767

*Note: Class of 2009 data is estimated.

New Hampshire Continued

# Enrolled in 2 Year Program/College Immediately																
	All Students	Male	Female	Hispanic	Non-Hispanic	White	Black	Native American	Asian/Pacific Islander	Multi-Racial	F/R Lunch Eligible	Not F/R Lunch Eligible	LEP	Not LEP	IEP	Not IEP
<i>Class of 2009</i>	2,392	1,206	1,186	69	2,323	2,244	35	**	36	**	425	1,967	40	2,352	439	1,953
<i>Class of 2010</i>	2,405	1,243	1,162	64	2,341	2,247	46	**	26	14	498	1,907	49	2,356	467	1,938
<i>Class of 2011</i>	2,078	1,078	1,000	55	2,023	1,919	51	**	36	11	480	1,598	52	2,026	402	1,676
# Enrolled in 4 Year Program/College Immediately																
	All Students	Male	Female	Hispanic	Non-Hispanic	White	Black	Native American	Asian/Pacific Islander	Multi-Racial	F/R Lunch Eligible	Not F/R Lunch Eligible	LEP	Not LEP	IEP	Not IEP
<i>Class of 2009</i>	7,007	3,064	3,943	103	6,904	6,656	81	**	152	**	611	6,396	48	6,959	351	6,656
<i>Class of 2010</i>	7,002	2,979	4,023	116	6,886	6,641	62	**	158	18	670	6,332	53	6,949	381	6,621
<i>Class of 2011</i>	6,423	2,802	3,621	123	6,300	6,023	69	15	163	30	711	5,712	50	6,373	332	6,091
# Enrolled in 2 Year Program/College at a later date																
	All Students	Male	Female	Hispanic	Non-Hispanic	White	Black	Native American	Asian/Pacific Islander	Multi-Racial	F/R Lunch Eligible	Not F/R Lunch Eligible	LEP	Not LEP	IEP	Not IEP
<i>Class of 2009</i>	**	**	**	**	**	**	**	**	**	**	**	**	**	**	**	**
<i>Class of 2010</i>	3,151	1,646	1,505	118	3,033	2,898	65	11	40	19	727	2,424	89	3,062	613	2,538
# Enrolled in 4 Year Program/College at a later date																
	All Students	Male	Female	Hispanic	Non-Hispanic	White	Black	Native American	Asian/Pacific Islander	Multi-Racial	F/R Lunch Eligible	Not F/R Lunch Eligible	LEP	Not LEP	IEP	Not IEP
<i>Class of 2009</i>	212	105	107	13	199	193	**	**	**	**	62	150	**	**	39	173
<i>Class of 2010</i>	7,520	3,212	4,308	127	7,393	7,120	75	**	170	20	752	6,768	64	7,456	444	7,076
# Students Completing 2-Year Program/College																
	All Students	Male	Female	Hispanic	Non-Hispanic	White	Black	Native American	Asian/Pacific Islander	Multi-Racial	F/R Lunch Eligible	Not F/R Lunch Eligible	LEP	Not LEP	IEP	Not IEP
<i>Class of 2009</i>	NA	NA	NA	NA	NA	NA	NA	NA	NA	NA	NA	NA	NA	NA	NA	NA
<i>Class of 2010</i>	NA	NA	NA	NA	NA	NA	NA	NA	NA	NA	NA	NA	NA	NA	NA	NA
# Students Completing 4-Year College																
	All Students	Male	Female	Hispanic	Non-Hispanic	White	Black	Native American	Asian/Pacific Islander	Multi-Racial	F/R Lunch Eligible	Not F/R Lunch Eligible	LEP	Not LEP	IEP	Not IEP
<i>Class of 2009</i>	NA	NA	NA	NA	NA	NA	NA	NA	NA	NA	NA	NA	NA	NA	NA	NA

New Hampshire Continued

Early Enrollment in Post-Secondary ON TIME GRADUATES ONLY																
	All Students	Male	Female	Hispanic	Non-Hispanic	White	Black	Native American	Asian/Pacific Islander	Multi-Racial	F/R Lunch Eligible	Not F/R Lunch Eligible	LEP	Not LEP	IEP	Not IEP
<i>Class of 2009</i>	8,818	4,020	4,798	149	8,669	8,381	100	**	170	**	950	7,868	80	8,738	750	8,068
<i>Class of 2010</i>	8,874	3,990	4,884	162	8,712	8,409	91	13	168	31	1,085	7,789	91	8,783	801	8,073
<i>Class of 2011</i>	8,395	3,819	4,576	173	8,222	7,854	115	19	193	41	1,162	7,233	97	8,298	719	7,676
Enrollment at any time in Post-Secondary GED COMPLETERS ONLY																
	All Students	Male	Female	Hispanic	Non-Hispanic	White	Black	Native American	Asian/Pacific Islander	Multi-Racial	F/R Lunch Eligible	Not F/R Lunch Eligible	LEP	Not LEP	IEP	Not IEP
<i>Class of 2009</i>	39	18	21	**	**	33	**	**	**	**	12	27	**	**	**	**
<i>Class of 2010</i>	28	14	14	**	**	27	**	**	**	**	**	**	**	**	**	**
<i>Class of 2011</i>	20	**	**	**	**	18	**	**	**	**	**	**	**	**	**	**
Enrollment at any time in Post-Secondary IDENTIFIED "DROP OUTS" ONLY																
	All Students	Male	Female	Hispanic	Non-Hispanic	White	Black	Native American	Asian/Pacific Islander	Multi-Racial	F/R Lunch Eligible	Not F/R Lunch Eligible	LEP	Not LEP	IEP	Not IEP
<i>Class of 2009</i>	**	**	**	**	**	**	**	**	**	**	**	**	**	**	**	**
<i>Class of 2010</i>	47	26	21	**	**	43	**	**	**	**	13	34	**	**	**	**
<i>Class of 2011</i>	25	14	11	**	**	21	**	**	**	**	12	13	**	**	**	**

Rhode Island

# First Time Freshmen																
	All Students	Male	Female	Hispanic	Non-Hispanic	White	Black	Native American	Asian/Pacific Islander	Multi-Racial	F/R Lunch Eligible	Not F/R Lunch Eligible	LEP	Not LEP	IEP	Not IEP
<i>Class of 2009</i>	13,327	6,795	6,532	2,346	10,981	9,286	1,233	89	373	-	5,815	7,512	740	12,587	2,828	10,499
<i>Class of 2010</i>	12,968	6,624	6,344	2,336	10,632	8,908	1,196	86	442	-	5,966	7,002	669	12,299	2,653	10,315
<i>Class of 2011</i>	12,352	6,259	6,093	2,453	9,899	8,098	1,188	79	370	164	6,309	6,043	769	11,583	2,651	9,701
# Students Transferred In or Out (+/-)																
	All Students	Male	Female	Hispanic	Non-Hispanic	White	Black	Native American	Asian/Pacific Islander	Multi-Racial	F/R Lunch Eligible	Not F/R Lunch Eligible	LEP	Not LEP	IEP	Not IEP
<i>Class of 2009</i>	-641	-366	-275	-153	-665	-396	-87	**	**	-	-318	-323	**	**	-224	-417
<i>Class of 2010</i>	-515	-302	-213	-141	-374	-308	-30	**	-43	-	-285	-230	**	**	-192	-323
<i>Class of 2011</i>	-352	-200	-152	-110	-242	-168	-53	**	-16	**	-277	-75	-13	-339	-130	-222
# Graduating On Time <= 4 Years																
	All Students	Male	Female	Hispanic	Non-Hispanic	White	Black	Native American	Asian/Pacific Islander	Multi-Racial	F/R Lunch Eligible	Not F/R Lunch Eligible	LEP	Not LEP	IEP	Not IEP
<i>Class of 2009</i>	9,576	4,573	5,003	1,403	8,173	7,076	764	58	275	-	3,484	6,092	467	9,109	1,528	8,048
<i>Class of 2010</i>	9,456	4,570	4,886	1,458	7,998	6,835	783	57	323	-	3,695	5,761	441	9,015	1,412	8,044
<i>Class of 2011</i>	9,270	4,371	4,899	1,575	7,695	6,497	756	47	267	128	3,961	5,309	516	8,754	1,464	7,806
# Cohort Students Enrolled in a 5th Year																
	All Students	Male	Female	Hispanic	Non-Hispanic	White	Black	Native American	Asian/Pacific Islander	Multi-Racial	F/R Lunch Eligible	Not F/R Lunch Eligible	LEP	Not LEP	IEP	Not IEP
<i>Class of 2009</i>	723	473	250	182	541	400	108	11	22	-	497	226	71	652	335	388
<i>Class of 2010</i>	832	522	310	179	653	508	114	16	15	-	539	293	64	768	384	448
<i>Class of 2011</i>	872	566	306	236	636	454	139	**	27	**	625	247	81	791	430	442
# Cohort Students Graduating in 5 Years																
	All Students	Male	Female	Hispanic	Non-Hispanic	White	Black	Native American	Asian/Pacific Islander	Multi-Racial	F/R Lunch Eligible	Not F/R Lunch Eligible	LEP	Not LEP	IEP	Not IEP
<i>Class of 2009</i>	347	235	112	75	272	197	60	**	**	-	227	120	32	315	140	207
<i>Class of 2010</i>	441	268	173	108	333	254	64	**	**	-	288	153	46	395	162	279

Rhode Island Continued

# Cohort Students Graduating in 6 Years																
	All Students	Male	Female	Hispanic	Non-Hispanic	White	Black	Native American	Asian/Pacific Islander	Multi-Racial	F/R Lunch Eligible	Not F/R Lunch Eligible	LEP	Not LEP	IEP	Not IEP
<i>Class of 2009</i>	66	40	26	16	50	40	**	**	**	-	47	19	**	**	46	20
<i>Class of 2010</i>	NA	NA	NA	NA	NA	NA	NA	NA	NA	-	NA	NA	NA	NA	NA	NA
# Cohort Students Obtaining GEDs																
	All Students	Male	Female	Hispanic	Non-Hispanic	White	Black	Native American	Asian/Pacific Islander	Multi-Racial	F/R Lunch Eligible	Not F/R Lunch Eligible	LEP	Not LEP	IEP	Not IEP
<i>Class of 2009</i>	629	358	271	105	524	442	66	**	13	-	359	270	17	612	148	481
<i>Class of 2010</i>	435	245	190	70	365	308	42	**	12	-	271	164	**	**	94	341
<i>Class of 2011</i>	362	214	148	71	291	229	45	**	12	**	272	90	**	**	70	292
# Alternative Certification/Completion																
	All Students	Male	Female	Hispanic	Non-Hispanic	White	Black	Native American	Asian/Pacific Islander	Multi-Racial	F/R Lunch Eligible	Not F/R Lunch Eligible	LEP	Not LEP	IEP	Not IEP
<i>Class of 2009</i>	**	**	**	**	**	**	**	**	**	-	**	**	**	**	**	**
<i>Class of 2010</i>	**	**	**	**	**	**	**	**	**	-	**	**	**	**	**	**
<i>Class of 2011</i>	**	**	**	**	**	**	**	**	**	**	**	**	**	**	**	**
# of Drop Outs as Reported by the State																
	All Students	Male	Female	Hispanic	Non-Hispanic	White	Black	Native American	Asian/Pacific Islander	Multi-Racial	F/R Lunch Eligible	Not F/R Lunch Eligible	LEP	Not LEP	IEP	Not IEP
<i>Class of 2009</i>	1,263	735	528	373	890	702	139	**	40	-	858	405	138	1,125	427	836
<i>Class of 2010</i>	1,236	726	537	355	908	687	173	13	35	-	901	362	123	1,140	425	838
<i>Class of 2011</i>	1,164	694	470	349	815	601	137	12	44	21	917	247	119	1,045	403	761
Early Enrollment in Post-Secondary																
	All Students	Male	Female	Hispanic	Non-Hispanic	White	Black	Native American	Asian/Pacific Islander	Multi-Racial	F/R Lunch Eligible	Not F/R Lunch Eligible	LEP	Not LEP	IEP	Not IEP
<i>Class of 2009</i>	5,597	2,592	3,005	590	5,007	4,446	377	31	153	-	1,501	4,096	149	5,448	640	4,957
<i>Class of 2010</i>	6,155	2,811	3,344	736	5,419	4,703	464	28	224	-	1,928	4,227	209	5,946	619	5,536
<i>Class of 2011</i>	5,895	2,554	3,341	774	5,121	4,456	392	27	174	72	1,970	3,925	223	5,672	625	5,270

Rhode Island Continued

# Enrolled in 2 Year Program/College Immediately																
	All Students	Male	Female	Hispanic	Non-Hispanic	White	Black	Native American	Asian/Pacific Islander	Multi-Racial	F/R Lunch Eligible	Not F/R Lunch Eligible	LEP	Not LEP	IEP	Not IEP
<i>Class of 2009</i>	1,789	860	929	268	1,521	1,328	144	13	36	-	694	1,095	86	1,703	388	1,401
<i>Class of 2010</i>	1,927	966	961	313	1,614	1,375	169	12	58	-	835	1,092	115	1,812	380	1,547
<i>Class of 2011</i>	2,065	983	1,082	418	1,647	1,341	209	14	59	24	1,027	1,038	151	1,914	396	1,669
# Enrolled in 4 Year Program/College Immediately																
	All Students	Male	Female	Hispanic	Non-Hispanic	White	Black	Native American	Asian/Pacific Islander	Multi-Racial	F/R Lunch Eligible	Not F/R Lunch Eligible	LEP	Not LEP	IEP	Not IEP
<i>Class of 2009</i>	3,808	1,732	2,076	322	3,486	3,118	233	18	117	-	807	3,001	63	3,745	252	3,556
<i>Class of 2010</i>	4,228	1,845	2,383	423	3,805	3,328	295	16	166	-	1,093	3,135	94	4,134	239	3,989
<i>Class of 2011</i>	3,830	1,571	2,259	356	3,474	3,115	183	13	115	48	943	2,887	72	3,758	229	3,601
# Enrolled in 2 Year Program/College at a later date																
	All Students	Male	Female	Hispanic	Non-Hispanic	White	Black	Native American	Asian/Pacific Islander	Multi-Racial	F/R Lunch Eligible	Not F/R Lunch Eligible	LEP	Not LEP	IEP	Not IEP
<i>Class of 2009</i>	2,799	1,374	1,425	506	2,293	1,946	262	21	64	-	1,229	1,570	162	2,637	608	2,191
<i>Class of 2010</i>	2,693	1,355	1,338	502	2,191	1,832	259	19	81	-	1,268	1,425	169	2,524	532	2,161
# Enrolled in 4 Year Program/College at a later date																
	All Students	Male	Female	Hispanic	Non-Hispanic	White	Black	Native American	Asian/Pacific Islander	Multi-Racial	F/R Lunch Eligible	Not F/R Lunch Eligible	LEP	Not LEP	IEP	Not IEP
<i>Class of 2009</i>	4,142	1,900	2,242	372	3,770	3,346	272	20	132	-	948	3,194	77	4,065	293	3,849
<i>Class of 2010</i>	4,477	1,979	2,498	462	4,015	3,510	315	17	173	-	1,185	3,292	101	4,376	264	4,213
# Students Completing 2-Year Program/College																
	All Students	Male	Female	Hispanic	Non-Hispanic	White	Black	Native American	Asian/Pacific Islander	Multi-Racial	F/R Lunch Eligible	Not F/R Lunch Eligible	LEP	Not LEP	IEP	Not IEP
<i>Class of 2009</i>	28	12	16	**	**	24	**	**	**	-	**	**	**	**	**	**
<i>Class of 2010</i>	NA	NA	NA	NA	NA	NA	NA	NA	NA	-	NA	NA	NA	NA	NA	NA

Rhode Island Continued

Early Enrollment in Post-Secondary ON TIME GRADUATES ONLY																
	All Students	Male	Female	Hispanic	Non-Hispanic	White	Black	Native American	Asian/Pacific Islander	Multi-Racial	F/R Lunch Eligible	Not F/R Lunch Eligible	LEP	Not LEP	IEP	Not IEP
<i>Class of 2009</i>	5,435	2,488	2,947	569	4,866	4,337	351	30	148	-	1,427	4,008	146	5,289	586	4,849
<i>Class of 2010</i>	5,971	2,704	3,267	706	5,265	4,577	443	28	217	-	1,836	4,135	200	5,771	569	5,402
<i>Class of 2011</i>	5,789	2,498	3,291	747	5,042	4,393	381	26	171	71	1,909	3,880	215	5,574	604	5,185
Enrollment at any time in Post-Secondary GED COMPLETERS ONLY																
	All Students	Male	Female	Hispanic	Non-Hispanic	White	Black	Native American	Asian/Pacific Islander	Multi-Racial	F/R Lunch Eligible	Not F/R Lunch Eligible	LEP	Not LEP	IEP	Not IEP
<i>Class of 2009</i>	35	29	**	**	**	28	**	**	**	-	16	19	**	**	11	24
<i>Class of 2010</i>	26	19	**	**	**	20	**	**	**	-	12	14	**	**	**	**
<i>Class of 2011</i>	30	22	**	**	**	17	**	**	**	**	21	**	**	**	**	**
Enrollment at any time in Post-Secondary IDENTIFIED "DROP OUTS" ONLY																
	All Students	Male	Female	Hispanic	Non-Hispanic	White	Black	Native American	Asian/Pacific Islander	Multi-Racial	F/R Lunch Eligible	Not F/R Lunch Eligible	LEP	Not LEP	IEP	Not IEP
<i>Class of 2009</i>	14	**	**	**	**	**	**	**	**	-	**	**	**	**	**	**
<i>Class of 2010</i>	22	11	11	**	**	14	**	**	**	-	**	**	**	**	**	**
<i>Class of 2011</i>	20	**	**	**	**	12	**	**	**	**	**	**	**	**	**	**

Vermont

# of Students in Cohort *The state accounted for Transfer Students (+/-) Prior to Submission																
	All Students	Male	Female	Hispanic	Non-Hispanic	White	Black	Native American	Asian/Pacific Islander	Multi-Racial	F/R Lunch Eligible	Not F/R Lunch Eligible	LEP	Not LEP	IEP	Not IEP
<i>Class of 2009</i>	7,344	3,762	3,582	95	7,249	7,102	155	84	147	-	2,631	4,713	136	7,208	1,197	6,147
<i>Class of 2010</i>	7,135	3,647	3,488	93	7,042	6,944	163	85	137	-	2,665	4,470	147	6,988	1,140	5,995
<i>Class of 2011</i>	6,849	3,568	3,281	94	6,755	6,597	165	101	186	-	2,645	4,204	134	6,715	1,107	5,742
# Graduating On Time <= 4 Years																
	All Students	Male	Female	Hispanic	Non-Hispanic	White	Black	Native American	Asian/Pacific Islander	Multi-Racial	F/R Lunch Eligible	Not F/R Lunch Eligible	LEP	Not LEP	IEP	Not IEP
<i>Class of 2009</i>	6,281	3,133	3,148	73	6,208	6,094	117	62	130	-	1,921	4,360	110	6,171	767	5,514
<i>Class of 2010</i>	6,218	3,103	3,115	73	6,145	6,072	121	64	117	-	2,043	4,175	111	6,107	798	5,420
<i>Class of 2011</i>	5,990	3,062	2,928	80	5,910	5,771	137	78	167	-	2,027	3,963	110	5,880	763	5,227
# Cohort Students Enrolled in a 5th Year (change in denominator)																
	All Students	Male	Female	Hispanic	Non-Hispanic	White	Black	Native American	Asian/Pacific Islander	Multi-Racial	F/R Lunch Eligible	Not F/R Lunch Eligible	LEP	Not LEP	IEP	Not IEP
<i>Class of 2009</i>	-46	-29	-17	**	**	-47	**	**	**	-	-31	-15	**	**	-24	-22
<i>Class of 2010</i>	**	**	**	**	**	**	**	**	**	-	**	**	**	**	**	**
# Cohort Students Graduating in 5 Years																
	All Students	Male	Female	Hispanic	Non-Hispanic	White	Black	Native American	Asian/Pacific Islander	Multi-Racial	F/R Lunch Eligible	Not F/R Lunch Eligible	LEP	Not LEP	IEP	Not IEP
<i>Class of 2009</i>	6,491	3,265	3,226	71	6,420	6,284	129	65	131	-	2,055	4,436	120	6,371	854	5,637
<i>Class of 2010</i>	6,414	3,225	3,189	77	6,337	6,251	132	68	126	-	2,178	4,236	126	6,288	867	5,547
# Cohort Students Graduating in 6 Years																
	All Students	Male	Female	Hispanic	Non-Hispanic	White	Black	Native American	Asian/Pacific Islander	Multi-Racial	F/R Lunch Eligible	Not F/R Lunch Eligible	LEP	Not LEP	IEP	Not IEP
<i>Class of 2009</i>	6,547	3,299	3,248	72	6,475	6,339	131	65	132	-	2,092	4,455	120	6,427	893	5,654

Vermont Continued

# Cohort Students Obtaining GEDs																
	All Students	Male	Female	Hispanic	Non-Hispanic	White	Black	Native American	Asian/Pacific Islander	Multi-Racial	F/R Lunch Eligible	Not F/R Lunch Eligible	LEP	Not LEP	IEP	Not IEP
<i>Class of 2009</i>	182	115	67	**	**	175	**	**	**	-	119	63	**	**	23	159
<i>Class of 2010</i>	128	65	63	**	**	127	**	**	**	-	72	56	**	**	18	110
<i>Class of 2011</i>	105	51	54	**	**	103	**	**	**	-	59	46	**	**	**	**
# Alternative Certification/Completion																
	All Students	Male	Female	Hispanic	Non-Hispanic	White	Black	Native American	Asian/Pacific Islander	Multi-Racial	F/R Lunch Eligible	Not F/R Lunch Eligible	LEP	Not LEP	IEP	Not IEP
<i>Class of 2009</i>	11	**	**	**	**	11	**	**	**	-	**	**	**	**	**	**
<i>Class of 2010</i>	**	**	**	**	**	**	**	**	**	-	**	**	**	**	**	**
<i>Class of 2011</i>	**	**	**	**	**	**	**	**	**	-	**	**	**	**	**	**
# of Drop Outs as Reported by the State																
	All Students	Male	Female	Hispanic	Non-Hispanic	White	Black	Native American	Asian/Pacific Islander	Multi-Racial	F/R Lunch Eligible	Not F/R Lunch Eligible	LEP	Not LEP	IEP	Not IEP
<i>Class of 2009</i>	697	401	296	15	682	663	19	18	11	-	469	228	14	683	248	449
<i>Class of 2010</i>	660	381	279	15	645	635	27	16	11	-	456	204	20	640	207	453
<i>Class of 2011</i>	646	378	268	11	635	622	21	22	15	-	490	156	14	632	225	421
Early Enrollment in Post-Secondary																
	All Students	Male	Female	Hispanic	Non-Hispanic	White	Black	Native American	Asian/Pacific Islander	Multi-Racial	F/R Lunch Eligible	Not F/R Lunch Eligible	LEP	Not LEP	IEP	Not IEP
<i>Class of 2009</i>	**	**	**	**	**	**	**	**	**	-	**	**	**	**	**	**
<i>Class of 2010</i>	**	**	**	**	**	**	**	**	**	-	**	**	**	**	**	**
<i>Class of 2011</i>	**	**	**	**	**	**	**	**	**	-	**	**	**	**	**	**
# Enrolled in 2 Year Program/College Immediately																
	All Students	Male	Female	Hispanic	Non-Hispanic	White	Black	Native American	Asian/Pacific Islander	Multi-Racial	F/R Lunch Eligible	Not F/R Lunch Eligible	LEP	Not LEP	IEP	Not IEP
<i>Class of 2009</i>	471	225	246	**	**	459	**	**	**	-	167	304	12	459	57	414
<i>Class of 2010</i>	479	205	274	**	**	461	**	**	23	-	183	296	21	458	61	418
<i>Class of 2011</i>	352	174	278	**	**	433	14	**	15	-	179	273	20	432	56	396

Vermont Continued

# Enrolled in 4 Year Program/College Immediately																
	All Students	Male	Female	Hispanic	Non-Hispanic	White	Black	Native American	Asian/Pacific Islander	Multi-Racial	F/R Lunch Eligible	Not F/R Lunch Eligible	LEP	Not LEP	IEP	Not IEP
<i>Class of 2009</i>	2,884	1,281	1,603	26	2,858	2,801	47	17	62	-	552	2,332	38	2,846	94	2,790
<i>Class of 2010</i>	2,876	1,283	1,593	33	2,843	2,822	42	13	57	-	560	2,316	40	2,836	106	2,770
<i>Class of 2011</i>	2,714	1,220	1,494	39	2,675	2,619	42	23	84	-	560	2,154	28	2,686	74	2,640
# Enrolled in 2 Year Program/College at a later date																
	All Students	Male	Female	Hispanic	Non-Hispanic	White	Black	Native American	Asian/Pacific Islander	Multi-Racial	F/R Lunch Eligible	Not F/R Lunch Eligible	LEP	Not LEP	IEP	Not IEP
<i>Class of 2009</i>	298	136	162	**	**	284	13	**	**	-	115	183	13	285	39	259
<i>Class of 2010</i>	275	112	163	**	**	263	**	**	**	-	130	145	**	**	48	227
# Enrolled in 4 Year Program/College at a later date																
	All Students	Male	Female	Hispanic	Non-Hispanic	White	Black	Native American	Asian/Pacific Islander	Multi-Racial	F/R Lunch Eligible	Not F/R Lunch Eligible	LEP	Not LEP	IEP	Not IEP
<i>Class of 2009</i>	267	127	140	**	**	259	**	**	**	-	60	207	**	**	20	247
<i>Class of 2010</i>	227	126	101	**	**	222	**	**	**	-	68	159	**	**	13	214
# Students Completing 2-Year Program/College																
	All Students	Male	Female	Hispanic	Non-Hispanic	White	Black	Native American	Asian/Pacific Islander	Multi-Racial	F/R Lunch Eligible	Not F/R Lunch Eligible	LEP	Not LEP	IEP	Not IEP
<i>Class of 2009</i>	67	29	38	**	**	67	**	**	**	-	21	46	**	**	**	**

Vermont Continued

Early Enrollment in Post-Secondary ON TIME GRADUATES ONLY																
	All Students	Male	Female	Hispanic	Non-Hispanic	White	Black	Native American	Asian/Pacific Islander	Multi-Racial	F/R Lunch Eligible	Not F/R Lunch Eligible	LEP	Not LEP	IEP	Not IEP
<i>Class of 2009</i>	71	22	49	**	**	67	**	**	**	-	24	47	**	**	**	**
<i>Class of 2010</i>	70	17	53	**	**	68	**	**	**	-	24	46	**	**	**	**
<i>Class of 2011</i>	40	12	28	**	**	35	**	**	**	-	15	25	**	**	**	**
Enrollment at any time in Post-Secondary GED COMPLETERS ONLY																
	All Students	Male	Female	Hispanic	Non-Hispanic	White	Black	Native American	Asian/Pacific Islander	Multi-Racial	F/R Lunch Eligible	Not F/R Lunch Eligible	LEP	Not LEP	IEP	Not IEP
<i>Class of 2009</i>	14	**	**	**	**	13	**	**	**	-	**	**	**	**	**	**
<i>Class of 2010</i>	**	**	**	**	**	**	**	**	**	-	**	**	**	**	**	**
<i>Class of 2011</i>	36	14	22	**	**	35	**	**	**	-	19	17	**	**	**	**
Enrollment at any time in Post-Secondary IDENTIFIED "DROP OUTS" ONLY																
	All Students	Male	Female	Hispanic	Non-Hispanic	White	Black	Native American	Asian/Pacific Islander	Multi-Racial	F/R Lunch Eligible	Not F/R Lunch Eligible	LEP	Not LEP	IEP	Not IEP
<i>Class of 2009</i>	88	44	44	**	**	84	**	**	**	-	45	43	**	**	14	74
<i>Class of 2010</i>	67	28	39	**	**	59	**	**	**	-	37	30	**	**	**	**
<i>Class of 2011</i>	44	16	28	**	**	42	**	**	**	-	26	18	**	**	**	**

Appendix C

References

Tashakkori, A., & Teddlie, C. (2003). *Handbook of mixed methods in social & behavioral research*. Thousand Oaks, CA: Sage.

UMass Donahue Institute (April 2010). *New England Secondary Schools Consortium: Technical report with baseline data*. Hadley, MA: University of Massachusetts.

UMass Donahue Institute (July 2011). *New England Secondary Schools Consortium key indicators: Phase II technical report*. Hadley, MA: University of Massachusetts.

Wheeler, D. J., & Lyday, R. W. (1989). *Evaluating the measurement process (2nd Ed.)*. Knoxville, TN: SPC Press.

Selected Literature

Conley, D.T. (2007). Toward a more comprehensive conception of college readiness. Eugene, OR: Educational Policy Improvement Center.

Roderick, M., Nagaoka, J., & Coca, V. (Spring 2009). College readiness for all: The challenges for urban high schools. The Future of Children, vol 19 (1).

Thanos, P., Camara, W., & Wiley, A. (May 25, 2009). Efforts to define college readiness in the United States. Presentation at the 11th International Conference on Education. NY: College Board.

Wiley, A., Wyatt, J., & Camara, W.J. (March 2010). The development of a multidimensional college readiness index. Research Report 2010-3. NY: College Board.